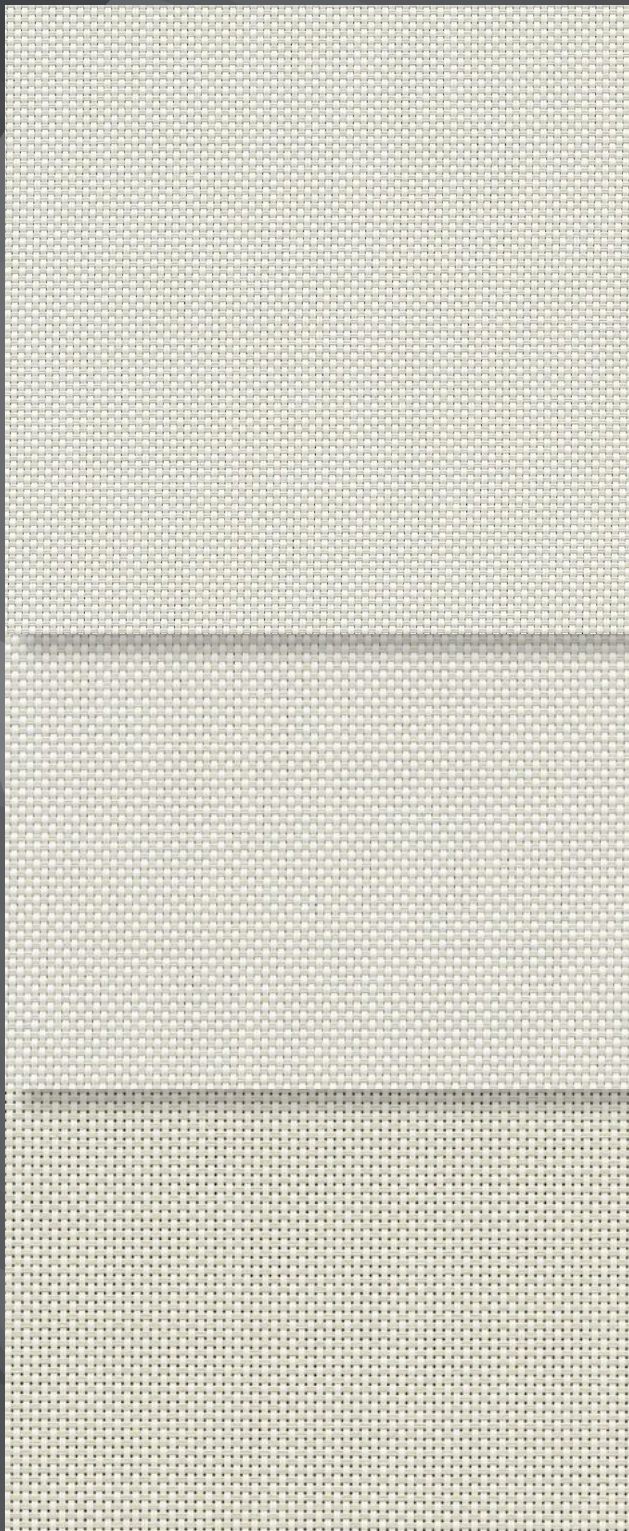
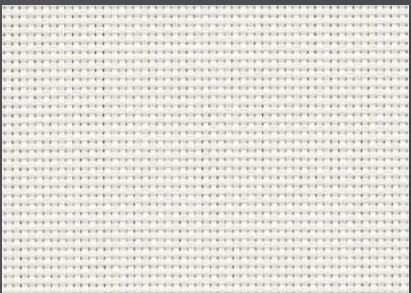


# SheerWeave® BASIC

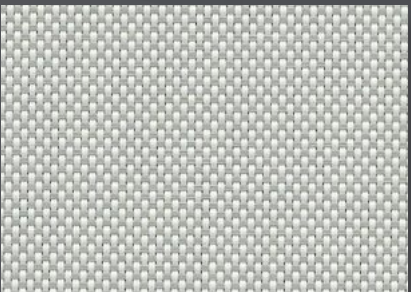
1%, 3%, & 5% Openness



**1%**  
P04 White/Bone



**3% P02 White**



**3% P05 White/Platinum**

**3%**  
P04 White/Bone



**3% V22 Charcoal/Grey**

**5%**  
P04 White/Bone



**3% V21 Charcoal**

The above openness styles are also available in the colors at right.

Digital sample of actual colors may vary slightly.



# SheerWeave® BASIC 1%, 3%, & 5% Openness

**SheerWeave BASIC** is the latest in innovative sun control fabric development. With all the benefits, certifications, and technical specifications you have come to expect from SheerWeave, but uniquely designed for the demanding and competitive commercial market, SheerWeave BASIC is an ideal choice for your spec-driven projects. A more robust fiberglass core yarn gives SheerWeave BASIC the added durability high traffic areas and public spaces require. Suitable for all types of interior window shade applications, SheerWeave BASIC is an economical alternative to traditional solar screen fabrics, and is also suitable for exterior roller shades.

## SHEERWEAVE STYLE BASIC

STANDARD WIDTH	<b>1% / 3% / 5%:</b> 126" (320 cm)	FABRIC THICKNESS	<b>1%:</b> 0.026 in (0.66 mm) <b>3%:</b> 0.025 in (0.64 mm) <b>5%:</b> 0.022 in (0.56 mm)
ROLL LENGTH	<b>1% / 3% / 5%:</b> 30 Linear Yards (27.4 lm)	OPENNESS FACTOR	<b>1%:</b> Approximately 1% <b>3%:</b> Approximately 3% <b>5%:</b> Approximately 5%
COMPOSITION	<b>1% / 3% / 5%:</b> 38% Fiberglass, 62% Vinyl on Fiberglass	UV BLOCKAGE	<b>1%:</b> Approximately 99% <b>3%:</b> Approximately 97% <b>5%:</b> Approximately 95%
MESH WEIGHT	<b>1%:</b> 17.2 oz/yd <sup>2</sup> (583 g/m <sup>2</sup> ) <b>3%:</b> 16.4 oz/yd <sup>2</sup> (556 g/m <sup>2</sup> ) <b>5%:</b> 14.1 oz/yd <sup>2</sup> (478 g/m <sup>2</sup> )	ACOUSTICAL VALUE	<b>1%:</b> N/A <b>3%:</b> NRC 0.60 / SAA 0.60 <b>5%:</b> NRC 0.10 / SAA 0.08
		ACOUSTICAL PERFORMANCE	<b>1%:</b> N/A NRC (Noise Reduction Coefficient) and SAA (Sound Absorption Average) tested in accordance with ASTM C423-09a.

## SPECIFICATIONS

FIRE CLASSIFICATION	California U.S. Title 19 (small scale), NFPA 701 TM#1 (small scale), NFPA 101 (Class A Rating), IBC Section 803.1.1 (Class A Rating), BS 5867 Part 2 Type B Performance, CAN/ULC-S 109 (large and small scale), NFPA 701 TM#2 (large scale), CAN/CGSB2-4.162-M80.
BACTERIA AND FUNGAL RESISTANCE	ASTM E 2180, ASTM G21, ASTM G22, AATCC30 Part 3, ASTM D 3273, GREENGUARD Mold and Bacteria Standard ASTM 6329; includes Microban antimicrobial additives.
ENVIRONMENTAL CERTIFICATION	Certified to GREENGUARD and GREENGUARD Gold standards for low chemical emissions into indoor air during product usage.
SAFE USE	RoHS/Directive 2002/95/EC, US Consumer Product Safety Commission Section 101, ANSI/WCMA A 100.1-2007 for lead content and REACH (EC 1907/2006) compliant.
STANDARD USES	Roller shades and panel tracks.
WARRANTY	10-year interior, 5-year exterior.

## TECHNICAL DATA

		SOLAR OPTICAL PROPERTIES												SHGC/G VALUE g-tot (glass & blind)					
		TS%			RS%			AS%			TV%			Single 1/4 CL			Insulating 1HA		
		1%	3%	5%	1%	3%	5%	1%	3%	5%	1%	3%	5%	1%	3%	5%	1%	3%	5%
COLOR	NUMBER																		
White	P02	15	15	19	71	64	68	14	21	13	15	16	17	0.26	0.29	0.29	0.21	0.22	0.22
White / Bone	P04	12	12	16	64	58	60	24	30	24	10	11	14	0.29	0.32	0.32	0.22	0.23	0.23
White / Platinum	P05	9	8	11	55	50	53	36	42	36	8	8	11	0.34	0.36	0.36	0.24	0.25	0.25
Charcoal	V21	1	1	6	4	4	4	95	95	90	1	2	6	0.60	0.60	0.61	0.37	0.37	0.37
Charcoal / Grey	V22	2	1	7	9	8	9	89	91	84	2	2	7	0.57	0.57	0.58	0.36	0.36	0.36



PRODUCT CERTIFIED FOR  
LOW CHEMICAL EMISSIONS  
UL.COM/GG  
UL 2818



MIF Seal of Approval



411 S. Pearl St. | Spiceland, IN 47385  
765.987.7999 | 800.238.7999  
draperinc.com

\*TS - Solar Transmittance, RS - Solar Reflectance, AS - Solar Absorptance, TV - Visual Transmittance \*SHGC = Solar Heat Gain Coefficient \*1/4 CL = 1/4" Clear Glass, 1 HA = 1" Heat Absorbing Glass \*Fabrics Installed Internally, Zero-Degree Profile Angle \*Solar Heat Gain Coefficient (SHGC) shown calculated according to Office of Building Technology, State and Community Programs, Energy Efficiency and Renewable Energy, U.S. Department of Energy's definition of SHGC. SHGC represents the percentage of solar heat gain that is transmitted to the interior through the glass and shading system. If you are using glass whose performance is listed in terms of SC, you may convert to SHGC by multiplying the SC by 0.87.

**PHIFER**  
INCORPORATED

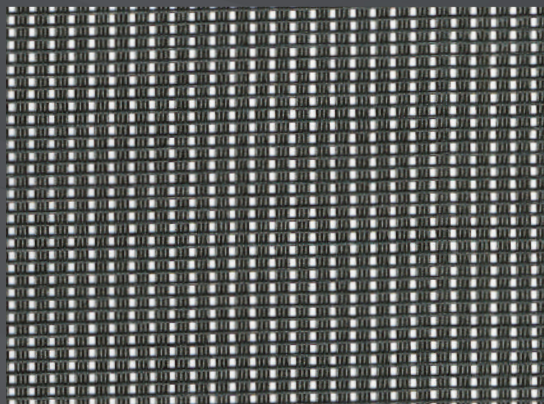
® SheerWeave is a registered trademark of PHIFER INCORPORATED.  
® MICROBAN is a registered trademark of Microban Products Company.  
TM UL, the UL logos and the UL mark are trademarks of UL LLC.  
© PHIFER INCORPORATED 3028204 922



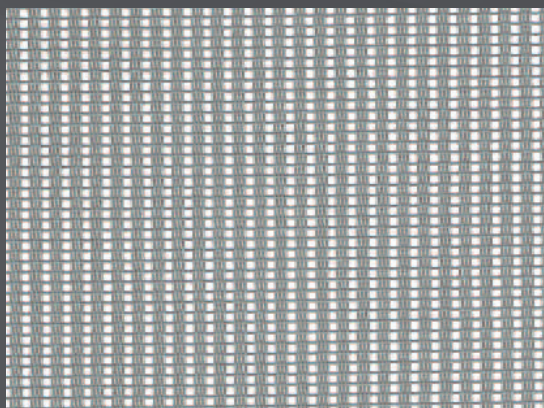
# SheerWeave® 1000 / SunScreen®



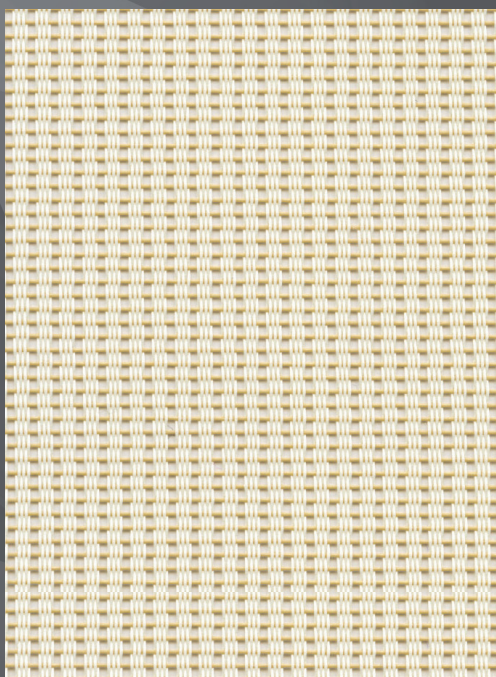
White



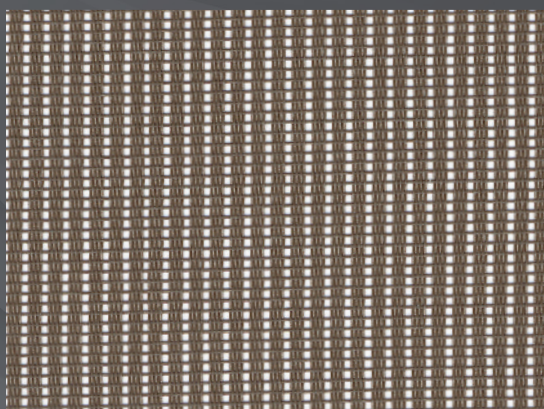
Charcoal



Silver Gray



Antique  
White



Bronze



# SheerWeave® 1000 / SunScreen®

**SheerWeave® 1000** is a vinyl coated fiberglass ribbed-weave fabric offering substantial shading and excellent outward visibility with improved daytime privacy. Style 1000 can also be used in exterior shading systems.

**SunScreen®** is woven vinyl-coated fiberglass screening manufactured to reduce solar heat gain and glare by absorbing and dissipating up to 70 percent of the sun's heat and glare before it reaches the window. SunScreen is easily installed on any type and size of window and also performs as an insect screening.

## SHEERWEAVE 1000 SPECIFICATIONS

STANDARD WIDTH	36", 48", 72", 84" and 96" (91.4 cm, 121.9 cm, 182.9 cm, 213.4 cm and 243.8 cm)	FABRIC THICKNESS	0.020 in (0.51 mm)
ROLL LENGTH	30 linear yards (27.4 lm)	OPENNESS FACTOR	Approximately 25%
COMPOSITION	35% Fiberglass, 65% Vinyl on Fiberglass	UV BLOCKAGE	Approximately 75%
MESH WEIGHT	8.8 oz/yd <sup>2</sup> (298 g/m <sup>2</sup> )		

FIRE CLASSIFICATION*	California U.S. Title 19 (small scale); NFPA 101 (Class A Rating); NFPA 701 TM#1 (small scale); NFPA 701 TM#2 (large scale); BS 5867 Part 2 Type B Performance; CAN/ULC-S 109 (large scale); IBC Section 803.1.1 (Class A Rating)
BACTERIA AND FUNGAL RESISTANCE	ASTM E 2180; ASTM G21; ASTM G22; AATCC30 Part 3; ASTM D 3273; GREENGUARD Mold and Bacteria Standard ASTM 6329; includes Microban antimicrobial additives.
ENVIRONMENTAL CERTIFICATION	Certified to GREENGUARD and GREENGUARD Gold standards for low chemical emissions into indoor air during product usage.
SAFE USE	RoHS/Directive 2002/95/EC; ANSI/WCMA A 100.1-2007 for lead content; US Consumer Product Safety Commission Section 101; REACH (EC 1907/2006) compliant.
WARRANTY	10-year interior; 5-year exterior.

TECHNICAL DATA		SOLAR OPTICAL PROPERTIES				SHGC/G VALUE g-tot (glass & blind)	
Color		TS	RS	AS	TV	1/4 CL	1/4 HA
<b>SHEERWEAVE 1000</b> 0-Degree Profile Angle • Fabrics Installed Internally							
White		36	50	14	31	0.42	0.35
Antique White		37	47	16	32	0.44	0.36



PRODUCT CERTIFIED FOR  
LOW CHEMICAL EMISSIONS  
UL.COM/GG  
UL 2818



**TrackLess Technology** minimizes the fiberglass yarns' inherent tendencies to track when being rolled up in a shade. With TrackLess Technology these same fabrics now track less, roll up straighter and reduce shade fabrication time.

## SUNSCREEN SPECIFICATIONS

STANDARD WIDTH	<b>Charcoal:</b> 36", 48", 60", 72", 84", and 96" (91.4 cm, 121.9 cm, 152.4 cm, 182.9 cm, 213.4 cm, and 243.8 cm); <b>Silver Gray:</b> 36", 48", 60", and 84" (91.4 cm, 121.9 cm, 152.4 cm, and 213.4 cm); <b>Bronze:</b> 36", 48", and 84" (91.4 cm, 121.9 cm, and 213.4 cm)	FABRIC THICKNESS	0.019 in (0.48 mm)
ROLL LENGTH	100 linear feet (30.48 lm)	OPENNESS FACTOR	Approximately 25%
COMPOSITION	35% Fiberglass, 65% Vinyl on Fiberglass	UV BLOCKAGE	Approximately 75%
MESH WEIGHT	8.5 oz/yd <sup>2</sup> (288 g/m <sup>2</sup> )		

FIRE CLASSIFICATION*	NFPA 101 (Class A Rating); IBC Section 803.1.1 (Class A Rating); CAN/ULC-S 109-3 (large scale).
BACTERIA AND FUNGAL RESISTANCE	ASTM E 2180; ASTM G21; GREENGUARD Mold and Bacteria Standard ASTM 6329; includes Microban antimicrobial additives.
ENVIRONMENTAL CERTIFICATION	Certified to GREENGUARD and GREENGUARD Gold standards for low chemical emissions into indoor air during product usage.
SAFE USE	RoHS/Directive 2002/95/EC; ANSI/WCMA A 100.1-2007 for lead content; US Consumer Product Safety Commission Section 101; REACH (EC 1907/2006) compliant.
WARRANTY	10-year exterior.

TECHNICAL DATA		SOLAR OPTICAL PROPERTIES				SHGC/G VALUE g-tot (glass & blind)		
Color		TS	RS	AS	TV	1/8 CL	1/4 CL	1/4 HA
<b>SUNSCREEN</b> 30-Degree Profile Angle • Fabrics Installed Externally								
Charcoal		24	5	71	28	0.29	0.29	0.31
Silver Gray		24	13	63	26	0.28	0.28	0.26
Bronze		26	14	60	27	0.30	0.30	0.27
<b>SUNSCREEN</b> 0-Degree Profile Angle • Fabrics Installed Internally								
Charcoal		25	6	69	29	0.67	0.64	0.46
Silver Gray		22	16	62	24	0.61	0.57	0.43
Bronze		26	14	60	27	0.63	0.59	0.44



PRODUCT CERTIFIED FOR  
LOW CHEMICAL EMISSIONS  
UL.COM/GG  
UL 2818

\*TS = Solar Transmittance, RS = Solar Reflectance, AS = Solar Absorptance, TV = Visual Transmittance, SHGC = Solar Heat Gain Coefficient; 1/8 CL = 1/8" Clear Glass, 1/4 CL = 1/4" Clear Glass, 1/4 HA = 1/4" Heat Absorbing Glass. The solar optical properties are used to calculate the solar heat gain coefficient (SHGC). The SHGC represents the percentage of solar heat gain that is transmitted to the interior through the glass and shading system. Dark colors provide maximum glare reduction and visibility. Fire classifications are subject to change. For additional performance values, test references and technical definitions visit us at [www.phifer.com](http://www.phifer.com).

**PHIFER**  
INCORPORATED

® SunScreen is a registered trademark of PHIFER INCORPORATED.  
TM UL, the UL logos and the UL mark are trademarks of UL LLC.  
© PHIFER INCORPORATED ® MICROBAN is a registered trademark of  
Microban Products Company.

221

**DRAPER®**

411 S. Pearl St. | Spiceland, IN 47385  
765.987.7999 | 800.238.7999  
[draperinc.com](http://draperinc.com)



# SheerWeave® Style SW2000 / 2100

5% & 10% Openness



**Style SW2000**  
(5% open)



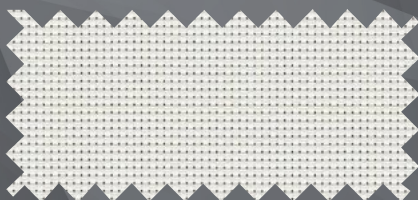
P04 White / Bone

**Style SW2100**  
(10% open)

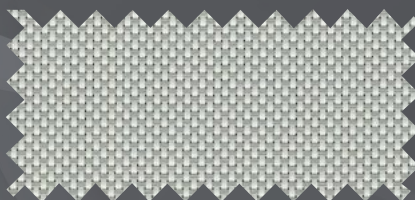


P04 White / Bone

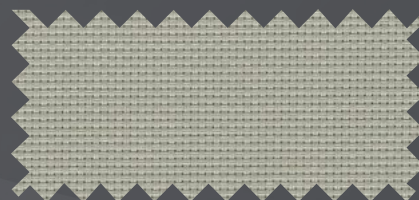
The above styles are also available in the colors shown below.



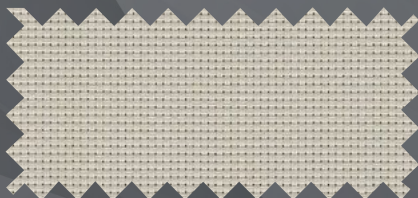
P02 White



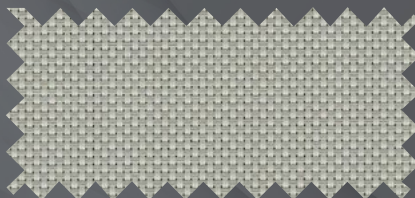
P05 White / Platinum



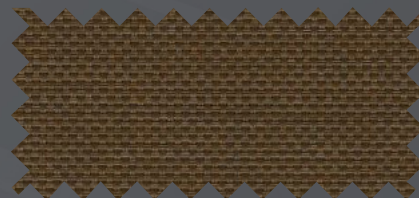
V04 Platinum



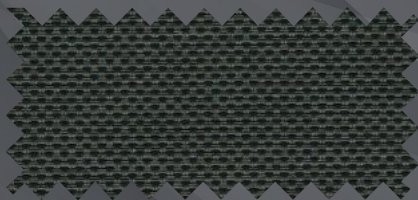
Q05 Bone



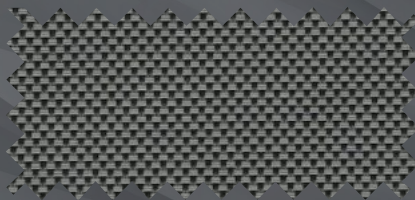
Q06 Bone / Platinum



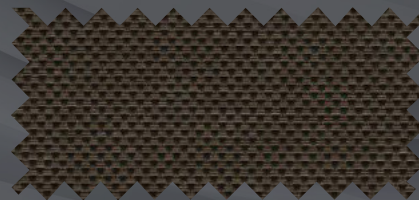
Q10 Bronze



V21 Charcoal



V22 Charcoal / Gray



V24 Charcoal / Chestnut

Digital sample of actual colors may vary slightly.



# SheerWeave® Style SW2000 / 2100

The original SheerWeave® fabrics, Styles 2000 and 2100, are vinyl-coated fiberglass basketweaves designed expressly for those applications that require a more opaque and non-directional fabric. Styles 2000 and 2100 can also be used in exterior shading systems.

## SHEERWEAVE STYLE SW2000 / 2100

STANDARD WIDTH	<b>SW2000:</b> 63", 98" and 126" (160 cm, 248.9 cm and 320 cm) <b>SW2100:</b> 63" and 98" (160 cm and 248.9 cm)	FABRIC THICKNESS	<b>SW2000:</b> 0.021 in (0.53 mm) <b>SW2100:</b> 0.021 in (0.53 mm)
ROLL LENGTH	30 Linear Yards (27.4 lm)	OPENNESS FACTOR	<b>SW2000:</b> Approximately 5% <b>SW2100:</b> Approximately 10%
COMPOSITION	37% Fiberglass, 63% Vinyl on Fiberglass	UV BLOCKAGE	<b>SW2000:</b> Approximately 95% <b>SW2100:</b> Approximately 90%
MESH WEIGHT	<b>SW2000:</b> 14.4 oz/yd <sup>2</sup> (488 g/m <sup>2</sup> ) <b>SW2100:</b> 12.9 oz/yd <sup>2</sup> (437 g/m <sup>2</sup> )	ACOUSTICAL VALUE	<b>SW2000:</b> NRC 0.10/SAA 0.11 <b>SW2100:</b> NRC 0.05/SAA 0.06
		ACOUSTICAL PERFORMANCE	NRC (Noise Reduction Coefficient) and SAA (Sound Absorption Average) tested in accordance with ASTM C423-09a.

## SPECIFICATIONS

FIRE CLASSIFICATION	NFPA 701 TM#1 (small scale), NFPA 701 TM#2 (large scale), NFPA 101 (Class A Rating), California U.S. Title 19 (small scale), BS 5867 Part 2 Type B Performance, CAN/ULC-S 109 (large and small scale), CAN/CGSB2-4.162-M80, IBC Section 803.1.1 (Class A Rating). Fire classifications are subject to change. Please visit <a href="http://phifer.com">phifer.com</a> for the most current information.
BACTERIA AND FUNGAL RESISTANCE	ASTM E 2180, ASTM G21, ASTM G22, AATCC30 Part 3, ASTM D 3273, GREENGUARD Mold and Bacteria Standard ASTM 6329; includes Microban antimicrobial additives.
ENVIRONMENTAL CERTIFICATION	Certified to GREENGUARD and GREENGUARD Gold standards for low chemical emissions into indoor air during product usage.
SAFE USE	RoHS Compliant, US Consumer Product Safety Commission Section 101, ANSI/WCMA A 100.1-2007 for lead content and REACH compliant.
STANDARD USES	Roller shades and panel tracks.
UV PROTECTION	SheerWeave sun control fabrics are an effective way to reduce harmful UV rays. Phifer Incorporated is a proud member of the Skin Cancer Foundation's Corporate Council.
WARRANTY	10-year interior, 5-year exterior.

## TECHNICAL DATA

		SOLAR OPTICAL PROPERTIES								SHGC/G VALUE g-tot (glass & blind)			
		TS%		RS%		AS%		TV%		Single 1/4 CL		Insulating 1 HA	
	OPENNESS	5%	10%	5%	10%	5%	10%	5%	10%	5%	10%	5%	10%
COLOR	NUMBER												
White	P02	20	22	67	60	13	18	16	16	0.30	0.34	0.28	0.30
White / Bone	P04	18	19	61	54	21	27	13	14	0.32	0.37	0.30	0.31
White / Platinum	P05	13	16	49	47	38	37	11	12	0.38	0.40	0.32	0.33
Bone	Q05	18	19	55	44	27	37	12	15	0.36	0.42	0.31	0.35
Bone / Platinum	Q06	12	16	43	38	45	46	10	14	0.41	0.44	0.34	0.36
Bronze	Q10	5	8	7	5	88	87	6	9	0.59	0.61	0.44	0.44
Platinum	V04	10	10	35	31	55	59	9	9	0.45	0.47	0.37	0.37
Charcoal	V21	6	9	4	4	90	87	6	10	0.61	0.62	0.44	0.44
Charcoal / Gray	V22	7	11	9	8	84	81	7	12	0.58	0.60	0.44	0.44
Charcoal / Chestnut	V24	6	11	7	6	87	83	6	12	0.59	0.61	0.44	0.44



PRODUCT CERTIFIED FOR  
LOW CHEMICAL EMISSIONS  
UL.COM/GG  
UL 2818



\*TS - Solar Transmittance, RS - Solar Reflectance, AS - Solar Absorbance, TV - Visual Transmittance \*SHGC = Solar Heat Gain Coefficient \*1/4 CL = 1/4" Clear Glass, 1 HA = 1" Heat Absorbing Glass \*Fabrics Installed Internally, Zero-Degree Profile Angle \*Solar Heat Gain Coefficient (SHGC) shown calculated according to Office of Building Technology, State and Community Programs, Energy Efficiency and Renewable Energy, U.S. Department of Energy's definition of SHGC. SHGC represents the percentage of solar heat gain that is transmitted to the interior through the glass and shading system. If you are using glass whose performance is listed in terms of SC, you may convert to SHGC by multiplying the SC by 0.87.



411 S. Pearl Street | Spiceland, IN 47385  
765.987.7999 | 800.238.7999

[draperinc.com](http://draperinc.com)

For additional information, questions, or to request fabric samples, please contact your Draper sales representative or scan to visit [request.draperinc.com](http://request.draperinc.com)



\* SheerWeave is a registered trademark of PHIFER INCORPORATED.  
\* MICROBAN is a registered trademark of Microban Products Company.  
TM UL, the UL logos and the UL mark are trademarks of UL LLC.  
© PHIFER INCORPORATED 0324



# SheerWeave® Style SW2500 / 2400 / 2900 / 2600

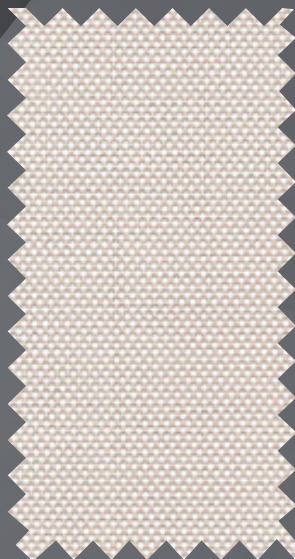
(2410)

(2390)

(2360)



**Style SW2500**  
(1% open)



SW2520  
P13 Oyster / Beige

**Style SW2400 (2410)**  
(3% open)



SW2420  
P13 Oyster / Beige

**Style SW2900 (2390)**  
(5% open)



SW2920  
P13 Oyster / Beige

**Style SW2600 (2360)**  
(10% open)



SW2620  
P13 Oyster / Beige

The above styles are also available in the colors shown below.



P84 Brite White



P12 Oyster



P14 Oyster / Pearl Gray



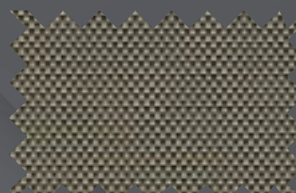
Q20 Beige



Q21 Beige / Pearl Gray



V20 Pearl Gray



V32 Charcoal / Alpaca



V22 Charcoal / Gray



V24 Charcoal / Chestnut



V21 Charcoal

Digital sample of actual colors may vary slightly.



# SheerWeave® Style SW2500 / 2400 / 2900 / 2600

(2410) (2390) (2360)

SheerWeave® Styles 2500, 2400 (2410), 2900 (2390) and 2600 (2360) are lightweight, vinyl-coated fiberglass fabrics, with full basketweave to provide the broadest range of performance in a non-directional fabric. These styles can also be used in exterior shading systems.

## SHEERWEAVE STYLE SW2500 / 2400 / 2900 / 2600

STANDARD WIDTH	<b>2500, 2400 (2410), 2900 (2390) and 2600 (2360):</b> 63", 98" and 126" (160 cm, 248.9 cm and 320 cm)	FABRIC THICKNESS	<b>2500:</b> 0.024 in (0.61 mm) <b>2400 (2410):</b> 0.020 in (0.51 mm)	<b>2900 (2390):</b> 0.017 in (0.43 mm) <b>2600 (2360):</b> 0.019 in (0.48 mm)
ROLL LENGTH	30 Linear Yards (27.4 lm)	OPENNESS FACTOR	<b>2500:</b> Approximately 1% <b>2400 (2410):</b> Approximately 3%	<b>2900 (2390):</b> Approximately 5% <b>2600 (2360):</b> Approximately 10%
COMPOSITION	<b>2500:</b> 37% Fiberglass, 63% Vinyl on Fiberglass <b>2400 (2410):</b> 36% Fiberglass, 64% Vinyl on Fiberglass <b>2900 (2390) and 2600 (2360):</b> 35% Fiberglass, 65% Vinyl on Fiberglass	UV BLOCKAGE	<b>2500:</b> Approximately 99% <b>2400 (2410):</b> Approximately 97%	<b>2900 (2390):</b> Approximately 95% <b>2600 (2360):</b> Approximately 90%
MESH WEIGHT	<b>2500:</b> 16.2 oz/yd <sup>2</sup> (549 g/m <sup>2</sup> ) <b>2400 (2410):</b> 14.1 oz/yd <sup>2</sup> (478 g/m <sup>2</sup> )	ACOUSTICAL VALUE	<b>2500:</b> NRC 0.55 / SAA 0.54 <b>2400 (2410):</b> NRC 0.20 / SAA 0.21	<b>2900 (2390):</b> NRC 0.10 / SAA 0.12 <b>2600 (2360):</b> NRC 0.05 / SAA 0.06
		ACOUSTICAL PERFORMANCE	NRC (Noise Reduction Coefficient) and SAA (Sound Absorption Average) tested in accordance with ASTM C423-09a.	

## SPECIFICATIONS

FIRE CLASSIFICATION	NFPA 701 TM#1 (small scale), NFPA 701 TM#2 (large scale), NFPA 101 (Class A Rating), California U.S. Title 19 (small scale), BS 5867 Part 2 Type B Performance, CAN/ULC-S 109 (large and small scale), CAN/CGSB2-4.162-M80, IBC Section 803.1.1 (Class A Rating). Fire classifications are subject to change. Please visit phifer.com for the most current information.
BACTERIA AND FUNGAL RESISTANCE	ASTM E 2180, ASTM G21, ASTM G22, AATCC30 Part 3, ASTM D 3273, GREENGUARD Mold and Bacteria Standard ASTM 6329; includes Microban antimicrobial additives.
ENVIRONMENTAL CERTIFICATION	Certified to GREENGUARD and GREENGUARD Gold standards for low chemical emissions into indoor air during product usage.
SAFE USE	ANSI/WCMA A 100.1-2007 for lead content, RoHS compliant, US Consumer Product Safety Commission Section 101, REACH compliant.
STANDARD USES	Roller shades and panel tracks.
UV PROTECTION	SheerWeave sun control fabrics are an effective way to reduce harmful UV rays. Phifer Incorporated is a proud member of the Skin Cancer Foundation's Corporate Council.
WARRANTY	10-year interior, 5-year exterior.

## TECHNICAL DATA

OPENNESS %		SOLAR OPTICAL PROPERTIES																SHGC/G VALUE g-tot (glass & blind)							
		TS%				RS%				AS%				TV%				Single 1/4 CL				Insulating 1HA			
		1%	3%	5%	10%	1%	3%	5%	10%	1%	3%	5%	10%	1%	3%	5%	10%	1%	3%	5%	10%	1%	3%	5%	10%
COLOR	NUMBER																								
Brite White	P84	16	19	22	29	72	70	67	61	12	11	11	10	14	17	20	27	0.25	0.27	0.30	0.34	0.20	0.21	0.22	0.24
Oyster	P12	16	19	24	28	72	70	66	62	12	11	10	10	15	17	22	27	0.25	0.27	0.31	0.34	0.20	0.21	0.23	0.24
Oyster / Beige	P13	13	16	22	26	65	61	58	58	22	23	20	16	11	13	19	24	0.29	0.32	0.34	0.36	0.22	0.23	0.24	0.25
Oyster / Pearl Gray	P14	8	11	17	23	56	49	49	48	36	40	34	29	7	8	14	21	0.33	0.37	0.39	0.41	0.24	0.26	0.26	0.27
Beige	Q20	12	15	19	25	55	53	51	48	33	32	30	27	9	12	15	22	0.35	0.36	0.38	0.41	0.25	0.25	0.26	0.27
Beige / Pearl Gray	Q21	8	11	15	21	46	42	42	42	46	47	43	37	6	8	12	18	0.38	0.41	0.42	0.43	0.27	0.28	0.28	0.29
Pearl Gray	V20	6	8	11	19	35	34	35	32	59	58	54	49	4	6	9	17	0.44	0.45	0.45	0.48	0.29	0.30	0.30	0.31
Charcoal	V21	2	3	6	12	4	4	4	4	94	93	90	84	2	3	6	12	0.60	0.60	0.61	0.62	0.37	0.37	0.37	0.38
Charcoal / Gray	V22	2	4	6	12	9	10	9	8	89	86	85	80	2	4	6	12	0.58	0.58	0.58	0.60	0.36	0.36	0.36	0.37
Charcoal / Chestnut	V24	2	4	6	11	6	7	6	6	92	89	88	83	2	4	6	11	0.59	0.59	0.60	0.61	0.37	0.36	0.37	0.37
Charcoal / Alpaca	V32	2	5	7	13	16	20	18	14	82	75	75	73	2	5	7	12	0.53	0.52	0.54	0.57	0.34	0.33	0.34	0.35



PRODUCT CERTIFIED FOR  
LOW CHEMICAL EMISSIONS  
UL.COM/GG  
UL 2818



PROTECTION THAT LIVES ON  
**MICROBAN®**



\*TS - Solar Transmittance, RS - Solar Reflectance, AS - Solar Absorbance, TV - Visual Transmittance \*SHGC = Solar Heat Gain Coefficient \*1/4 CL = 1/4" Clear Glass, 1 HA = 1" Heat Absorbing Glass \*Fabrics Installed Internally, Zero-Degree Profile Angle \*Solar Heat Gain Coefficient (SHGC) shown calculated according to Office of Building Technology, State and Community Programs, Energy Efficiency and Renewable Energy, U.S. Department of Energy's definition of SHGC. SHGC represents the percentage of solar heat gain that is transmitted to the interior through the glass and shading system. If you are using glass whose performance is listed in terms of SC, you may convert to SHGC by multiplying the SC by 0.87.

**DRAPER®**

411 S. Pearl Street | Spiceland, IN 47385  
765.987.7999 | 800.238.7999

draperinc.com

For additional information, questions, or to request fabric samples, please contact your Draper sales representative or scan to visit [request.draperinc.com](http://request.draperinc.com)



**PHIFER**  
INCORPORATED

© SheerWeave is a registered trademark of PHIFER INCORPORATED.  
© MICROBAN is a registered trademark of Microban Products Company.  
TM UL, the UL logos and the UL mark are trademarks of UL LLC.  
© PHIFER INCORPORATED 0324



# SheerWeave® Style SW7000

Room Darkening Fabric



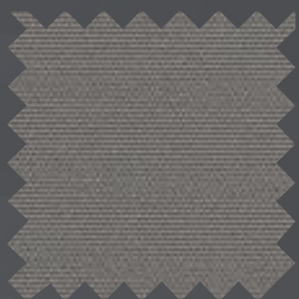
SW7000-Q00  
Merino



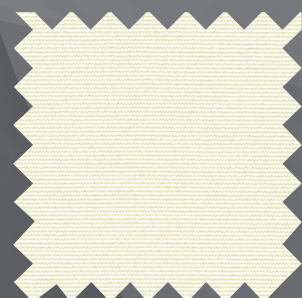
SW7000-V70  
Porpoise



SW7000-V41  
Canyon



SW7000-V39  
Graphite



SW7000-P63  
Birch



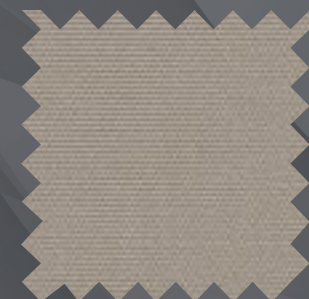
SW7000-P64  
Sand



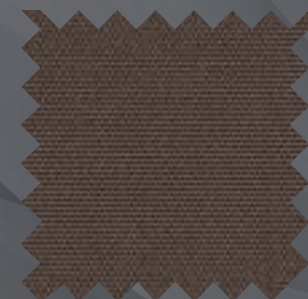
SW7000-Q57  
Wheat



SW7000-U67  
Canvas



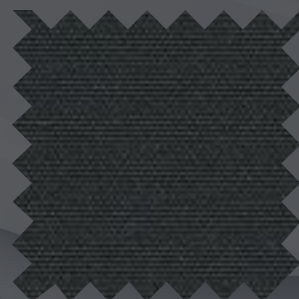
SW7000-Q58  
Mushroom



SW7000-U69  
Cocoa



SW7000-P62  
White



SW7000-V40  
Onyx

Digital sample of actual colors may vary slightly.



# SheerWeave® Style SW7000 Room Darkening Fabric

SheerWeave® 7000 is uniquely designed to provide total privacy when complete room darkening is needed. With a broad range of decorator colors, the look and feel of rich cloth and a PVC-free composition, Style 7000 will enhance the beauty and function of both commercial and residential spaces. All Style 7000 colors have an off-white backing.

## SHEERWEAVE STYLE 7000 BLACKOUT

WIDTHS	94" and 118" (238.8cm and 300cm)	FABRIC THICKNESS	0.029 in (0.74 mm)
ROLL LENGTH	30 Linear Yards (27.4 lm)	OPENNESS FACTOR	Opaque
COMPOSITION	100% Polyester with Acrylic Flocked Backing	ACOUSTICAL VALUE	NRC 0.10 / SAA 0.08
MESH WEIGHT	12.4 oz/yd <sup>2</sup> (420.43 g/m <sup>2</sup> )	ACOUSTICAL PERFORMANCE	NRC (Noise Reduction Coefficient) and SAA (Sound Absorption Average) tested in accordance with ASTM C423-09a.

## SPECIFICATIONS

FIRE CLASSIFICATION	California U.S. Title 19 (small scale), NFPA 701 TM#1 (small scale), BS 5867 Part 2 Type B Performance, CAN/ULC-S 109 (large and small scale), CAN/CGSB2-4.162-M80, IBC Section 803.1.1 (Class A Rating), NFPA 101 (Class A Rating). Fire classifications are subject to change. Please visit phifer.com for the most current information.
BACTERIA AND FUNGAL RESISTANCE	ASTM G21
ENVIRONMENTAL CERTIFICATION	Certified to GREENGUARD and GREENGUARD Gold standards for low chemical emissions into indoor air during product usage.
SAFE USE	RoHS Compliant, US Consumer Product Safety Commission Section 101 and ANSI/WCMA A 100.1-2007 for lead content.
Standard Uses	Roller shades & panel tracks.
UV Protection	SheerWeave sun control fabrics are an effective way to reduce harmful UV rays. Phifer Incorporated is a proud member of the Skin Cancer Foundation's Corporate Council.
Warranty	5-year interior.
CLEANING INSTRUCTIONS	Fabric should be regularly dusted/vacuumed as appropriate. If commercial spot cleaners are used, they must first be tested and allowed to dry on an inconspicuous area to ensure compatibility.

## TECHNICAL DATA

CODE / COLOR	SOLAR OPTICAL PROPERTIES				SHGC/G VALUE g-tot (glass & blind) Single Insulating	
	TS	RS	AS	TV	1/4 CL	1 HA
P63 Birch	0	74	26	0	0.21	0.18
Q00 Merino	0	72	28	0	0.23	0.19
Q57 Wheat	0	75	25	0	0.21	0.18
U67 Canvas	0	73	27	0	0.22	0.19
P62 White	0	74	26	0	0.21	0.18
P64 Sand	0	73	27	0	0.22	0.19
Q58 Mushroom	0	70	30	0	0.23	0.20
U69 Cocoa	0	72	28	0	0.23	0.19
V41 Canyon	0	74	26	0	0.21	0.19
V39 Graphite	0	71	29	0	0.23	0.19
V70 Porpoise	0	73	27	0	0.22	0.19
V40 Onyx	0	72	28	0	0.23	0.19



PRODUCT CERTIFIED FOR  
LOW CHEMICAL EMISSIONS  
UL.COM/GG  
UL 2818



**NOTE: Railroaded this fabric is not recommended.**



\*TS - Solar Transmittance, RS - Solar Reflectance, AS - Solar Absorptance, TV - Visual Transmittance \*SHGC = Solar Heat Gain Coefficient \*1/4 CL = 1/4" Clear Glass, 1 HA = 1" Heat Absorbing Glass \*Fabrics Installed Internally, Zero-Degree Profile Angle \*Solar Heat Gain Coefficient (SHGC) shown calculated according to Office of Building Technology, State and Community Programs, Energy Efficiency and Renewable Energy, U.S. Department of Energy's definition of SHGC. SHGC represents the percentage of solar heat gain that is transmitted to the interior through the glass and shading system. If you are using glass whose performance is listed in terms of SC, you may convert to SHGC by multiplying the SC by 0.87.



411 S. Pearl Street | Spiceland, IN 47385  
765.987.7999 | 800.238.7999

[draperinc.com](http://draperinc.com)

For additional information, questions, or to request fabric samples, please contact your Draper sales representative or scan to visit [request.draperinc.com](http://request.draperinc.com)



**PHIFER**  
INCORPORATED

® SheerWeave is a registered trademark of PHIFER INCORPORATED.  
TM UL, the UL logos and the UL mark are trademarks of UL LLC.  
© PHIFER INCORPORATED 0324

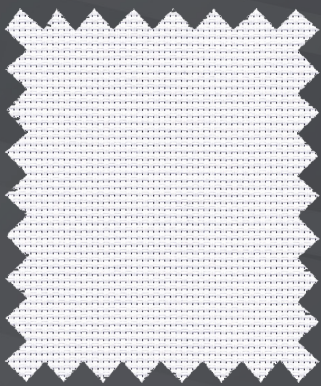


# SheerWeave® Style SW7100

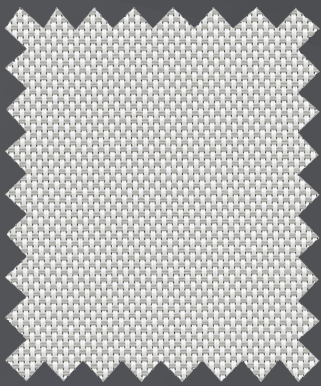
Room Darkening Fabric



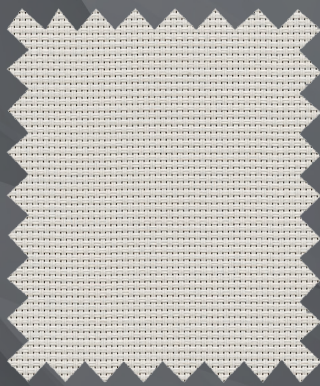
P13 Oyster / Beige



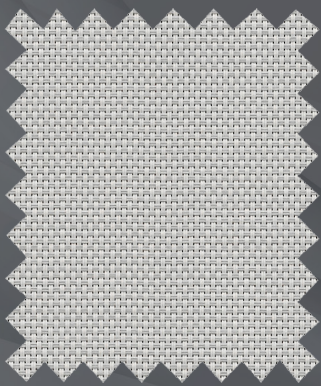
P12 Oyster



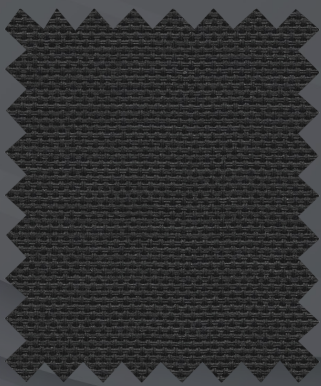
P14 Oyster / Pearl Grey



Q20 Beige



Q21 Beige / Pearl Grey



V21 Charcoal

Digital sample of actual colors may vary slightly.



# SheerWeave® Style SW7100 Room Darkening Fabric

Style 7100 is a durable laminated room darkening fabric that combines the woven texture of Style 2390 as the face fabric with a durable vinyl backing to achieve light blockage. Style 7100 coordinates easily with other SheerWeave fabrics when multi-purpose shades are needed. All Style 7100 colors have a white backing.

## SHEERWEAVE STYLE SW7100

STANDARD WIDTH	63" and 96" (160 cm and 243.8 cm)	FABRIC THICKNESS	0.023 in (0.58 mm)
ROLL LENGTH	30 Linear Yards (27.4 lm)	OPENNESS FACTOR	Opaque
COMPOSITION	37% Fiberglass, 63% Vinyl on Fiberglass Laminated with a two-ply 100% PVC blackout film	ACOUSTICAL VALUE	NRC 0.05 / SAA 0.03
MESH WEIGHT	19.4 oz/yd <sup>2</sup> (658 g/m <sup>2</sup> )	ACOUSTICAL PERFORMANCE	NRC (Noise Reduction Coefficient) and SAA (Sound Absorption Average) tested in accordance with ASTM C423-09a.

## SPECIFICATIONS

FIRE CLASSIFICATION	California U.S. Title 19 (small scale), NFPA 701 TM#1 (small scale), NFPA 701 TM#2 (large scale), NFPA 101 (Class B Rating), California Technical Bulletin 117, IBC Section 803.1.1 (Class B Rating), BS 5867 Part 2 Type B Performance, CAN/ULC-S 109 (large and small scale). Fire classifications are subject to change. Please visit phifer.com for the most current information.
BACTERIA AND FUNGAL RESISTANCE	ASTM E 2180, ASTM G21, AATCC30 Part 3, ASTM D 3273, GREENGUARD Mold and Bacteria Standard ASTM 6329; Style 2000 face includes Microban antimicrobial additives.
ENVIRONMENTAL CERTIFICATION	Certified to GREENGUARD and GREENGUARD Gold standards for low chemical emissions into indoor air during product usage.
SAFE USE	RoHS Compliant, US Consumer Product Safety Commission Section 101, ANSI/WCMA A 100.1-2007 for lead content and REACH Compliant.
STANDARD USES	Roller shades and panel tracks.
UV PROTECTION	SheerWeave sun control fabrics are an effective way to reduce harmful UV rays. Phifer Incorporated is a proud member of the Skin Cancer Foundation's Corporate Council.
WARRANTY	10-year interior.

## TECHNICAL DATA

		SOLAR OPTICAL PROPERTIES		SHGC/G VALUE g-tot (glass & blind)	
		RS%	AS%	Single 1/4 CL	Insulating 1HA
COLOR	NUMBER				
Oyster	P12	71	29	0.23	0.19
Oyster / Beige	P13	71	29	0.23	0.19
Oyster / Pearl Grey	P14	71	29	0.23	0.19
Beige	Q20	71	29	0.23	0.19
Beige / Pearl Grey	Q21	71	29	0.23	0.19
Charcoal	V21	71	29	0.23	0.19



PRODUCT CERTIFIED FOR  
LOW CHEMICAL EMISSIONS  
UL COM/CG  
UL 2818



PROTECTION THAT LIVES ON  
**MICROBAN®**



\*TS - Solar Transmittance, RS - Solar Reflectance, AS - Solar Absorptance, TV - Visual Transmittance \*SHGC = Solar Heat Gain Coefficient \*1/4 CL = 1/4" Clear Glass, 1 HA = 1" Heat Absorbing Glass \*Fabrics Installed Internally, Zero-Degree Profile Angle \*Solar Heat Gain Coefficient (SHGC) shown calculated according to Office of Building Technology, State and Community Programs, Energy Efficiency and Renewable Energy, U.S. Department of Energy's definition of SHGC. SHGC represents the percentage of solar heat gain that is transmitted to the interior through the glass and shading system. If you are using glass whose performance is listed in terms of SC, you may convert to SHGC by multiplying the SC by 0.87.



411 S. Pearl Street | Spiceland, IN 47385  
765.987.7999 | 800.238.7999

draperinc.com

For additional information, questions, or to request fabric samples, please contact your Draper sales representative or scan to visit [request.draperinc.com](http://request.draperinc.com)



**PHIFER**  
INCORPORATED

® SheerWeave is a registered trademark of PHIFER INCORPORATED.  
® MICROBAN is a registered trademark of Microban Products Company.  
TM UL, the UL logos and the UL mark are trademarks of UL LLC.  
© PHIFER INCORPORATED 0724



# SheerWeave® Style SW7500

## Room Darkening Fabric



7500 R13  
Ice



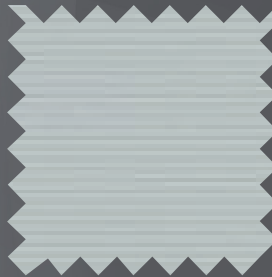
7500 R39  
Cloud



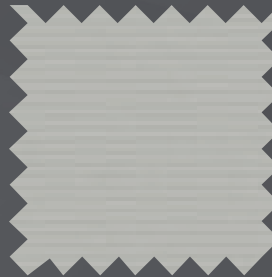
7500 R40  
Porcelain



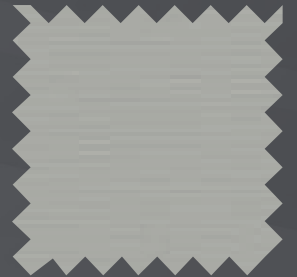
7500 R41  
Limestone



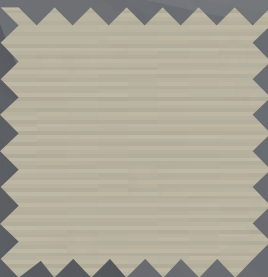
7500 R97  
Mist



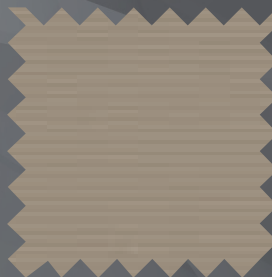
7500 R42  
Nimbus



7500 R43  
Tundra



7500 R17  
Dune



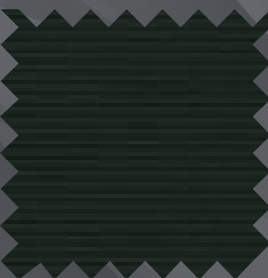
7500 R19  
Stone



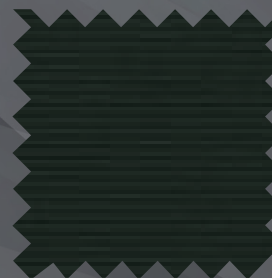
7500 R20  
Odyssey



7500 R21  
Orient



7500 R22  
Midnight



7500 R99  
Midnight x2



7500 S97  
Orient x2

Digital sample of actual colors may vary slightly.



# SheerWeave® Style SW7500 Room Darkening Fabric

This attractive opaque fabric maintains high quality at an economical price. Style 7500 is presented in a classic range of neutral colors with a unique PVC-free composition that is ideal for commercial applications. SheerWeave Style 7500 is an excellent option when total room darkening is needed.

## SHEERWEAVE STYLE 7500

STANDARD WIDTH	118" (300cm)	FABRIC THICKNESS	0.016 in (0.40 mm)
ROLL LENGTH	30 Linear Yards (27.4 lm)	OPENNESS FACTOR	Room Darkening/Opaque
COMPOSITION	100% Polyester with Acrylic Coating	ACOUSTICAL VALUE	NRC 0.00 / SAA 0.03
MESH WEIGHT	12.14 oz/yd <sup>2</sup> (412 g/m <sup>2</sup> )	ACOUSTICAL PERFORMANCE	NRC (Noise Reduction Coefficient) and SAA (Sound Absorption Average) tested in accordance with ASTM C423-09a.

## SPECIFICATIONS

FIRE CLASSIFICATION	NFPA 701 TM#1 (small scale), NFPA 701 TM#2 (large scale), NFPA 101 (Class A Rating), California U.S. Title 19 (small scale), BS 5867 Part 2 Type B Performance, CAN/ULC-S 109 (large and small scale), CAN/CGSB2-4.162-M80, IBC Section 803.1.1 (Class A Rating). Fire classifications are subject to change. Please visit phifer.com for the most current information.
BACTERIA AND FUNGAL RESISTANCE	ASTM E 2180 and ASTM G21
ENVIRONMENTAL CERTIFICATION	Certified to GREENGUARD and GREENGUARD Gold standards for low chemical emissions into indoor air during product usage.
SAFE USE	RoHS Compliant, US Consumer Product Safety Commission Section 101 and ANSI/WCMA A 100.1-2007 for lead content. REACH Compliant.
STANDARD USES	Roller shades & panel tracks.
UV PROTECTION	SheerWeave sun control fabrics are an effective way to reduce harmful UV rays. Phifer Incorporated is a proud member of the Skin Cancer Foundation's Corporate Council.
WARRANTY	5-year interior.
CLEANING INSTRUCTIONS	Fabric should be regularly dusted/vacuumed as appropriate. If commercial spot cleaners are used, they must first be tested and allowed to dry on an inconspicuous area to ensure compatibility.

## STYLE 7500

CODE / COLOR	COLOR	SOLAR OPTICAL PROPERTIES				SHGC/G VALUE	
						g-tot (glass & blind)	Single Insulating
Room-side	Street-side	TS%	RS%	AS%	TV%	1/4 CL	1 HA
R13 Ice	Off-white	0	68	32	0	0.24	0.20
R39 Cloud	Off-white	0	68	32	0	0.24	0.20
R40 Porcelain	Off-white	0	68	32	0	0.24	0.20
R41 Limestone	Off-white	0	68	32	0	0.24	0.20
R97 Mist	Off-white	0	68	32	0	0.24	0.20
R42 Nimbus	Off-white	0	68	32	0	0.24	0.20
R43 Tundra	Off-white	0	68	32	0	0.24	0.20
R17 Dune	Off-white	0	68	32	0	0.24	0.20
R19 Stone	Off-white	0	68	32	0	0.24	0.20
R20 Odyssey	Off-white	0	68	32	0	0.24	0.20
R21 Orient	Off-white	0	68	32	0	0.24	0.20
R22 Midnight	Off-white	0	68	32	0	0.24	0.20
R99 Midnight x2	Midnight	4	9	87	0	0.57	0.36
S97 Orient x2	Orient	4	13	83	0	0.56	0.35



PRODUCT CERTIFIED FOR  
LOW CHEMICAL EMISSIONS  
UL.COM/GG  
UL 2818



\*TS - Solar Transmittance, RS - Solar Reflectance, AS - Solar Absorptance, TV - Visual Transmittance \*SHGC = Solar Heat Gain Coefficient \*1/4 CL = 1/4" Clear Glass, 1 HA = 1" Heat Absorbing Glass \*Fabrics Installed Internally, Zero-Degree Profile Angle \*Solar Heat Gain Coefficient (SHGC) shown calculated according to Office of Building Technology, State and Community Programs, Energy Efficiency and Renewable Energy, U.S. Department of Energy's definition of SHGC. SHGC represents the percentage of solar heat gain that is transmitted to the interior through the glass and shading system. If you are using glass whose performance is listed in terms of SC, you may convert to SHGC by multiplying the SC by 0.87.

**DRAPER®**  
411 S. Pearl Street | Spiceland, IN 47385  
765.987.7999 | 800.238.7999  
draperinc.com

For additional information, questions, or to request fabric samples, please contact your Draper sales representative or scan to visit [request.draperinc.com](http://request.draperinc.com)



**PHIFER**  
INCORPORATED

® SheerWeave is a registered trademark of PHIFER INCORPORATED.  
® MICROBAN is a registered trademark of Microban Products Company.  
TM UL, the UL logos and the UL mark are trademarks of UL LLC.  
© PHIFER INCORPORATED 3028204 1124





STYLE SW8000 3% FABRIC



8000 S01 Snow



8000 S02 Eggshell



8000 S03 Ecru



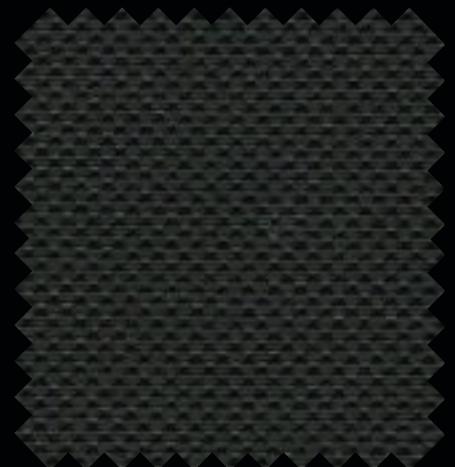
8000 S04 Silver



8000 S05 Smoke



8000 S06 Seal



8000 S07 Kohl

# SheerWeave® Style SW8000 Fabric

Cradle to Cradle Certified™ Bronze and constructed from 100% polyester yarn, Style 8000 is strong, lightweight, and 100% recyclable. The unique 2x2 basketweave provides excellent fabric stability and enhances outward views.

## BENEFITS OF STYLE 8000 INCLUDE:

- Cradle to Cradle Certified™ Bronze
- 100% Recyclable
- PVC free
- Halogen free
- Phthalate free
- Improved energy efficiency in dark colors
- LEED Material Ingredient Disclosure Credit Eligible

## SHEERWEAVE STYLE 8000

STANDARD WIDTH	118" (300cm)	FABRIC THICKNESS	0.019 in (0.47 mm)
ROLL LENGTH	30 Linear Yards (27.4 lm)	OPENNESS FACTOR	Approximately 3%
COMPOSITION	100% Polyester	ACOUSTICAL VALUE	NRC 0.20 / SAA 0.22
MESH WEIGHT	7.35 oz/yd <sup>2</sup> (249 g/m <sup>2</sup> )	ACOUSTICAL PERFORMANCE	NRC (Noise Reduction Coefficient) and SAA (Sound Absorption Average) tested in accordance with ASTM C423-09a

## SPECIFICATIONS

FIRE CLASSIFICATION	California U.S. Title 19 (small scale), NFPA 701 TM#1 (small scale), NFPA 101 (Class A Rating), IBC Section 803.1.1 (Class A Rating), BS 5867 Part 2 Type B Performance, NFPA 701 TM#2 (large scale), CAN/ULC-S 109 (large and small scale), B1(DIN 4102-1), CAN/CGSB2-4.162-M80
BACTERIA AND FUNGAL RESISTANCE	ASTM E 2180 and ASTM G21
ENVIRONMENTAL CERTIFICATION	Cradle to Cradle Certified™ Bronze. Certified to GREENGUARD and GREENGUARD Gold standards for low chemical emissions into indoor air during product usage.
SAFE USE	RoHS/Directive 2002/95/EC, REACH (EC 1907/2006) compliant, US Consumer Product Safety Commission Section 101 and ANSI/WCMA A 100.1-2007 for lead content.
STANDARD USES	Roller shades & panel tracks.
UV PROTECTION	Seal of Approval by the Melanoma International Foundation (MIF) for effectiveness in preventing sun damage to the skin or eyes.
WARRANTY	5-year interior.

## STYLE 8000 3%

CODE	COLOR	SOLAR OPTICAL PROPERTIES				SHGC/G VALUE g-tot (glass & blind)	
		Ts%	Rs%	As%	Tv%	Single	Insulating
S01	Snow	38	54	8	36	0.40	0.27
S02	Eggshell	37	52	11	35	0.41	0.27
S03	Ecru	30	49	21	25	0.42	0.28
S04	Silver	30	46	24	22	0.44	0.29
S05	Smoke	23	38	39	9	0.46	0.30
S06	Seal	21	33	46	8	0.49	0.31
S07	Kohl	18	26	56	7	0.51	0.33



\*Ts - Solar Transmittance, Rs - Solar Reflectance, As - Solar Absorptance, Tv - Visual Transmittance \*SHGC = Solar Heat Gain Coefficient \*1/4 CL = 1/4" Clear Glass, 1 HA = 1" Heat Absorbing Glass \*Fabrics Installed Internally, Zero-Degree Profile Angle \*Solar Heat Gain Coefficient (SHGC) shown calculated according to Office of Building Technology, State and Community Programs, Energy Efficiency and Renewable Energy, U.S. Department of Energy's definition of SHGC. SHGC represents the percentage of solar heat gain that is transmitted to the interior through the glass and shading system. If you are using glass whose performance is listed in terms of SC, you may convert to SHGC by multiplying the SC by 0.87.

**PHIFER**  
INCORPORATED

@ SheerWeave is a registered trademark of PHIFER INCORPORATED.  
TM Cradle to Cradle Certified is a mark licensed by the Cradle to Cradle Products Innovation Institute.  
TM UL, the UL logos and the UL mark are trademarks of UL LLC.  
© PHIFER INCORPORATED V18 3035030

**DRAPER®**  
411 S. Pearl St. | Spiceland, IN 47385  
765.987.7999 | 800.238.7999  
draperinc.com



SheerWeave® Infinity®<sub>2</sub>  
1%, 3%, & 5%

INFINITY<sub>2</sub>



PG2 Almond (1% open)



PG2 Almond (3% open)



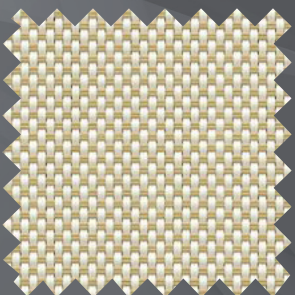
PG2 Almond (5% open)



The above openness options are also available in the colors shown below.



1% Open PG1 Cotton



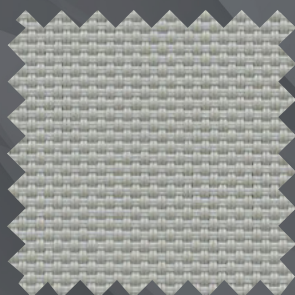
1% Open PG3 Wheat



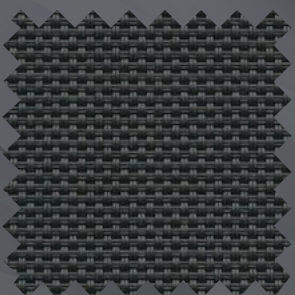
1% Open PG4 Stone



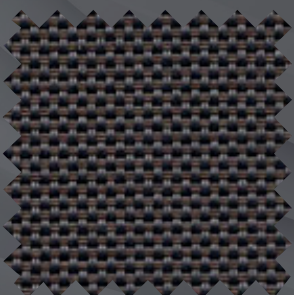
1% Open QG1 Barley



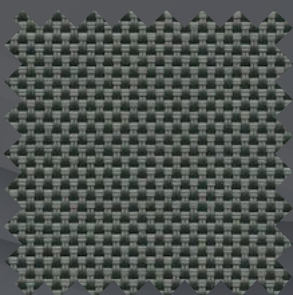
1% Open VG1 Nickel



1% Open VG2 Midnight



1% Open VG3 Bark



1% Open VG4 Slate

Digital sample of actual colors may vary slightly.

# SheerWeave® Infinity<sup>2</sup> 1%, 3%, & 5%

SheerWeave Infinity<sup>2</sup> sustainable sun control fabrics are eco-friendly full basketweaves designed to meet the most stringent environmental design standards. With 100% recycled content, 100% recyclable, and a PVC-free composition, Infinity<sup>2</sup> fabrics offer the same solar heat and glare control properties as traditional SheerWeave fabrics for conserving energy, harnessing natural light and maintaining interior comfort levels.

## SHEERWEAVE STYLE Infinity<sup>2</sup>

STANDARD WIDTH	63" and 98" (160 cm and 248.9 cm)	FABRIC THICKNESS	<b>1%:</b> 0.032 in (0.813 mm) <b>3%:</b> 0.031 in (0.787 mm) <b>5%:</b> 0.030 in (0.762 mm)
ROLL LENGTH	30 Linear Yards (27.4 lm)	OPENNESS FACTOR	<b>1%:</b> Approximately 1% <b>3%:</b> Approximately 3% <b>5%:</b> Approximately 5%
COMPOSITION	100% TPO (Thermoplastic Olefin), 20% TPO Fiber Yarn / 80% TPO Coating on TPO Yarn	UV BLOCKAGE	<b>1%:</b> Approximately 99% <b>3%:</b> Approximately 97% <b>5%:</b> Approximately 95%
MESH WEIGHT	<b>1%:</b> 13.9 oz/yd <sup>2</sup> (471 g/m <sup>2</sup> ) <b>3%:</b> 13.69 oz/yd <sup>2</sup> (464.17 g/m <sup>2</sup> ) <b>5%:</b> 12.82 oz/yd <sup>2</sup> (434.67 g/m <sup>2</sup> )	ACOUSTICAL VALUE	<b>1%:</b> NRC 0.20 / SAA 0.23 <b>3%:</b> NRC 0.20 / SAA 0.19 <b>5%:</b> NRC 0.10 / SAA 0.11
		ACOUSTICAL PERFORMANCE	NRC (Noise Reduction Coefficient) and SAA (Sound Absorption Average) tested in accordance with ASTM C423-09a.

## SPECIFICATIONS

FIRE CLASSIFICATION	<b>1%:</b> NFPA 701 TM#1 (small scale), NFPA 101 (Class A Rating), CAN/ULC-S 109 (large scale), IBC Section 803.1.1 (Class A Rating) <b>3%:</b> NFPA 701 TM#1 (small scale), NFPA 101 (Class A Rating), CAN/ULC-S 109 (large scale), IBC Section 803.1.1 (Class A Rating), BS 5867 Part 2 Type B Performance. <b>5%:</b> NFPA 701 TM#1 (small scale), NFPA 101 (Class A Rating), CAN/ULC-S 109 (large scale), IBC Section 803.1.1 (Class A Rating), BS 5867 Part 2 Type B Performance, CAN/CGSB 2-4.162-M80.
BACTERIA AND FUNGAL RESISTANCE	ASTM E 2180, ASTM G21.
ENVIRONMENTAL CERTIFICATION	Certified to GREENGUARD and GREENGUARD Gold standards for low chemical emissions into indoor air during product usage.
SAFE USE	RoHS/Directive 2002/95/EC, US Consumer Product Safety Commission Section 101, ANSI/WCMA A 100.1-2007 for lead content and REACH (EC 1907/2006) compliant.
STANDARD USES	Roller shades and panel tracks.
UV PROTECTION	Seal of Approval by the Melanoma International Foundation (MIF) for effectiveness in preventing sun damage to the skin or eyes.
WARRANTY	5-year interior.

## TECHNICAL DATA

		SOLAR OPTICAL PROPERTIES												SHGC/G VALUE g-tot (glass & blind)					
		TS%			RS%			AS%			TV%			Single 1/4 CL			Insulating 1HA		
		1%	3%	5%	1%	3%	5%	1%	3%	5%	1%	3%	5%	1%	3%	5%	1%	3%	5%
OPENNESS %	NUMBER																		
COTTON	PG1	20	20	23	68	70	68	12	10	9	18	19	22	0.29	0.28	0.30	0.22	0.21	0.22
Almond	PG2	15	17	20	61	61	60	24	22	20	12	15	18	0.31	0.32	0.33	0.23	0.23	0.23
Wheat	PG3	12	12	14	54	52	51	34	36	35	10	9	12	0.35	0.37	0.37	0.25	0.25	0.26
Stone	PG4	13	12	15	55	52	52	32	36	33	11	11	14	0.35	0.37	0.37	0.24	0.25	0.25
Barley	QG1	18	16	19	52	53	51	30	31	30	15	14	17	0.37	0.37	0.38	0.26	0.25	0.26
Nickel	VG1	8	9	10	37	36	34	55	55	56	7	8	11	0.42	0.44	0.45	0.30	0.30	0.30
Midnight	VG2	1	3	5	6	6	6	93	91	89	2	5	8	0.59	0.59	0.60	0.36	0.37	0.37
Bark	VG3	3	3	4	7	7	7	90	90	89	5	4	6	0.58	0.58	0.59	0.37	0.37	0.37
Slate	VG4	2	3	5	9	10	9	89	87	86	4	5	7	0.57	0.57	0.58	0.36	0.36	0.36



PRODUCT CERTIFIED FOR  
LOW CHEMICAL EMISSIONS  
UL COM/GG  
UL 2818



411 S. Pearl St. | Spiceland, IN 47385  
765.987.7999 | 800.238.7999  
draperinc.com

## PHIFER

INCORPORATED

® SheerWeave is a registered trademark of PHIFER INCORPORATED.

® MICROBAN is a registered trademark of Microban Products Company.

TM UL, the UL logos and the UL mark are trademarks of UL LLC.

© PHIFER INCORPORATED 3028500

522

\*TS - Solar Transmittance, RS - Solar Reflectance, AS - Solar Absorptance, TV - Visual Transmittance \*SHGC = Solar Heat Gain Coefficient \*1/4 CL = 1/4" Clear Glass, 1 HA = 1" Heat Absorbing Glass \*Fabrics Installed Internally, Zero-Degree Profile Angle \*Solar Heat Gain Coefficient (SHGC) shown calculated according to Office of Building Technology, State and Community Programs, Energy Efficiency and Renewable Energy, U.S. Department of Energy's definition of SHGC. SHGC represents the percentage of solar heat gain that is transmitted to the interior through the glass and shading system. If you are using glass whose performance is listed in terms of SC, you may convert to SHGC by multiplying the SC by 0.87.



# SheerWeave® Style PW4600 / 4500

3% & 5% Openness



**Style PW4600**  
(3% open)



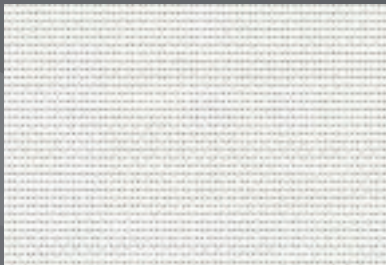
Q60 Golden Sand

**Style PW4500**  
(5% open)



Q60 Golden Sand

The above styles are also available in the colors shown below.



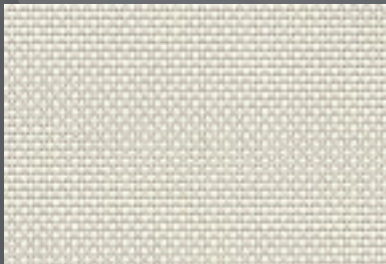
P06 Chalk



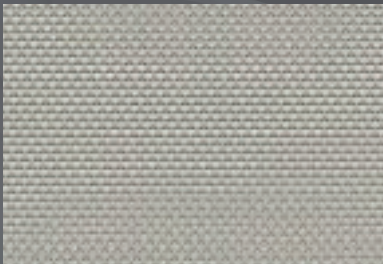
P10 Granite



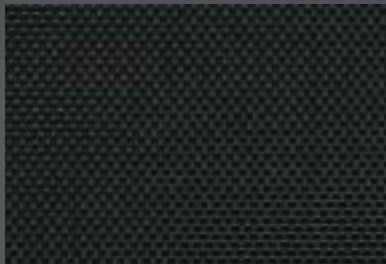
Q59 Ecru



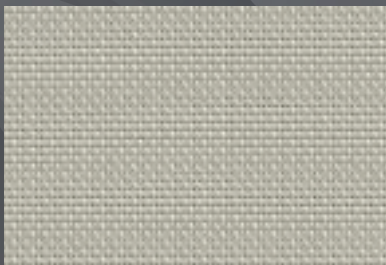
U32 Linen



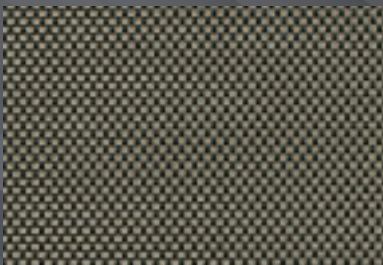
V07 Pewter



V10 Ebony



V44 Sandstone



V95 Cappuccino



V96 Dark Bronze

Digital sample of actual colors may vary slightly.



# SheerWeave® Style PW4600 / 4500

Using advances in polyester yarn development, Styles 4600 and 4500 are thinner, lighter weight vinyl-coated polyester fabrics offered in 10 decorator colors. Woven in a 2x2 basketweave, these fabrics are ideal for applications where a more opaque and non-directional fabric is needed. These styles can also be used in exterior shading systems.

## SHEERWEAVE STYLE PW4600 / 4500

STANDARD WIDTH	<b>PW4600:</b> 63", 98" and 126" (160 cm, 248.9 cm and 320 cm) <b>PW4500:</b> 63", 98" and 126" (160 cm, 248.9 cm and 320 cm)	FABRIC THICKNESS	<b>PW4600:</b> 0.030 in (0.76 mm) <b>PW4500:</b> 0.024 in (0.61 mm)
ROLL LENGTH	30 Linear Yards (27.4 lm)	OPENNESS FACTOR	<b>PW4600:</b> Approximately 3% <b>PW4500:</b> Approximately 5%
COMPOSITION	<b>PW4600:</b> 22% Polyester, 78% Vinyl on Polyester <b>PW4500:</b> 17% Polyester, 83% Vinyl on Polyester	UV BLOCKAGE	<b>PW4600:</b> Approximately 97% <b>PW4500:</b> Approximately 95%
MESH WEIGHT	<b>PW4600:</b> 17.4 oz/yd <sup>2</sup> (589.97 g/m <sup>2</sup> ) <b>PW4500:</b> 14.4 oz/yd <sup>2</sup> (488.25 g/m <sup>2</sup> )	ACOUSTICAL VALUE	<b>PW4600:</b> NRC 0.20 / SAA 0.23 <b>PW4500:</b> NRC 0.15 / SAA 0.17
		ACOUSTICAL PERFORMANCE	NRC (Noise Reduction Coefficient) and SAA (Sound Absorption Average) tested in accordance with ASTM C423-09a.

## SPECIFICATIONS

FIRE CLASSIFICATION	NFPA 701 TM#1 (small scale), NFPA 701 TM#2 (large scale), NFPA 101 (Class A Rating), California U.S. Title 19 (small scale), BS 5867 Part 2 Type B Performance, CAN/ULC-S 109 (large and small scale), IBC Section 803.1.1 (Class A Rating). Fire classifications are subject to change. Please visit <a href="http://phifer.com">phifer.com</a> for the most current information.
BACTERIA AND FUNGAL RESISTANCE	ASTM E 2180, ASTM G21, ASTM G22, AATCC30 Part 3, ASTM D 3273, GREENGUARD Mold and Bacteria Standard ASTM 6329; includes Microban antimicrobial additives.
ENVIRONMENTAL CERTIFICATION	Certified to GREENGUARD and GREENGUARD Gold standards for low chemical emissions into indoor air during product usage.
SAFE USE	RoHS Compliant, US Consumer Product Safety Commission Section 101, ANSI/WCMA A 100.1-2007 for lead content and REACH Compliant.
STANDARD USES	Roller shade and panel tracks.
UV PROTECTION	SheerWeave sun control fabrics are an effective way to reduce harmful UV rays. Phifer Incorporated is a proud member of the Skin Cancer Foundation's Corporate Council.
WARRANTY	10-year interior, 5-year exterior.

## TECHNICAL DATA

		SOLAR OPTICAL PROPERTIES								SHGC/G VALUE g-tot (glass & blind)			
		TS%		RS%		AS%		TV%		Single 1/4 CL		Insulating 1 HA	
	OPENNESS	3%	5%	3%	5%	3%	5%	3%	5%	3%	5%	3%	5%
COLOR	NUMBER												
Chalk	P06	10	12	74	74	16	14	9	11	0.23	0.23	0.19	0.19
Granite	P10	5	6	43	47	52	47	7	8	0.40	0.37	0.27	0.26
Ecru	Q59	7	9	58	56	35	35	8	9	0.32	0.33	0.23	0.24
Golden Sand	Q60	6	7	37	37	57	56	7	8	0.44	0.44	0.29	0.29
Linen	U32	8	11	64	63	28	26	8	12	0.29	0.30	0.22	0.23
Pewter	V07	5	6	31	30	64	64	7	9	0.46	0.47	0.30	0.30
Ebony	V10	3	5	3	3	94	92	5	7	0.61	0.61	0.37	0.37
Sandstone	V44	5	8	39	40	56	52	6	9	0.42	0.42	0.29	0.29
Cappuccino	V95	4	6	20	18	76	76	6	9	0.52	0.53	0.33	0.34
Dark Bronze	V96	4	7	5	5	91	88	7	10	0.60	0.61	0.37	0.37



PRODUCT CERTIFIED FOR  
LOW CHEMICAL EMISSIONS  
UL.COM/GG  
UL 2818



\*TS - Solar Transmittance, RS - Solar Reflectance, AS - Solar Absorptance, TV - Visual Transmittance \*SHGC = Solar Heat Gain Coefficient \*1/4 CL = 1/4" Clear Glass, 1 HA = 1" Heat Absorbing Glass \*Fabrics Installed Internally, Zero-Degree Profile Angle \*Solar Heat Gain Coefficient (SHGC) shown calculated according to Office of Building Technology, State and Community Programs, Energy Efficiency and Renewable Energy, U.S. Department of Energy's definition of SHGC. SHGC represents the percentage of solar heat gain that is transmitted to the interior through the glass and shading system. If you are using glass whose performance is listed in terms of SC, you may convert to SHGC by multiplying the SC by 0.87.



411 S. Pearl Street | Spiceland, IN 47385  
765.987.7999 | 800.238.7999

[draperinc.com](http://draperinc.com)

For additional information, questions, or to request fabric samples, please contact your Draper sales representative or scan to visit [request.draperinc.com](http://request.draperinc.com)



© SheerWeave is a registered trademark of PHIFER INCORPORATED.  
© MICROBAN is a registered trademark of Microban Products Company.  
TM UL, the UL logos and the UL mark are trademarks of UL LLC.  
© PHIFER INCORPORATED 1124



# SheerWeave® Style PW4901 / 4903

## 1% & 3% Openness

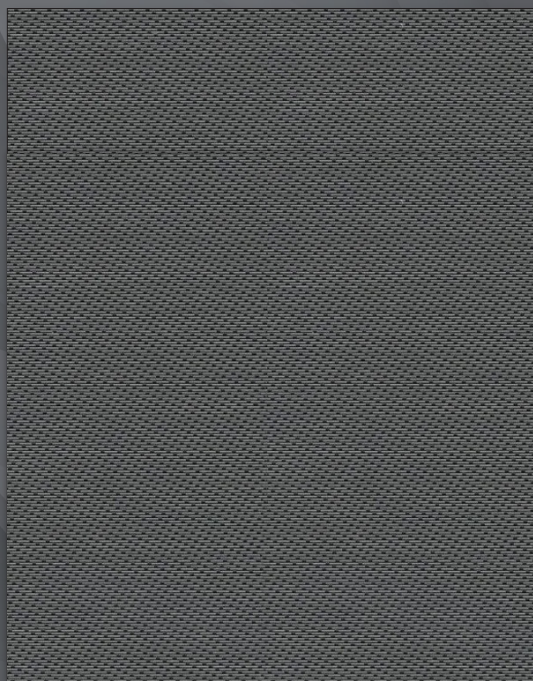


The unique twill weave creates two fabrics in one: distinct yet complimentary colors are exposed on the face and back.



1% Style PW4901

V28 Slate



3% Style PW4903

V28 Slate



**Reversible:**  
Room side is facing up.  
Flip to see street side.

P26 Chalk / Wheat

Q23 Whitesands

Q25 Birch

Q22 Flaxen

Q26 Cobblestone

V03 Pewter / Chalk

Q07 Kettal Grey

V28 Slate

P25 Chalk / Black

Q16 Tobacco

P06 Chalk

Q27 Soft Grey

V10 Ebony

Fabrics sampled on the waterfall are 3%. All colors are available in 1% and 3% openness.





# SheerWeave® Style PW4901 / 4903 1% & 3%

Form follows function in this unique combination of color and weave. Using thin and light weight vinyl-coated polyester yarns, Styles 4901 and 4903 are as versatile as they are beautiful. Styles 4901 and 4903 can also be used in exterior shading systems.

## SHEERWEAVE STYLE PW4901 / 4903

STANDARD WIDTH	63" and 98" (160 cm and 248.9 cm)	FABRIC THICKNESS	<b>4901 1%:</b> 0.028 in (0.71 mm)	<b>4903 3%:</b> 0.027 in (0.69 mm)
ROLL LENGTH	30 Linear Yards (27.4 lm)	OPENNESS FACTOR	<b>4901 1%:</b> Approximately 1%	<b>4903 3%:</b> Approximately 3%
COMPOSITION	17% Polyester / 83% Vinyl on Polyester	UV BLOCKAGE	<b>4901 1%:</b> Approximately 99%	<b>4903 3%:</b> Approximately 97%
MESH WEIGHT	<b>4901 1%:</b> 15.85 oz/yd <sup>2</sup> (573 g/m <sup>2</sup> ) <b>4903 3%:</b> 14.9 oz/yd <sup>2</sup> (505.20 g/m <sup>2</sup> )	ACOUSTICAL VALUE	<b>4901 1%:</b> NRC 0.60 / SAA 0.59 <b>4903 3%:</b> NRC 0.25 / SAA 0.25	
		ACOUSTICAL PERFORMANCE	NRC (Noise Reduction Coefficient) and SAA (Sound Absorption Average) tested in accordance with ASTM C423-09a.	

## SPECIFICATIONS

FIRE CLASSIFICATION	California U.S. Title 19 (small scale), NFPA 701 TM#1 (small scale), NFPA 101 (Class A Rating), IBC Section 803.1.1 (Class A Rating), BS 5867 Part 2 Type B Performance, NFPA 701 TM#2 (large scale), CAN/ ULC-S 109 (large and small scale), CAN/CGSB2-4. 162-M80. Fire classifications are subject to change. Please visit phifer.com for the most current information.
BACTERIA AND FUNGAL RESISTANCE	ASTM E 2180, ASTM G21, ASTM G22, AATCC30 Part 3, ASTM D 3273, GREENGUARD Mold and Bacteria Standard ASTM 6329; includes Microban antimicrobial additives.
ENVIRONMENTAL CERTIFICATION	Certified to GREENGUARD and GREENGUARD Gold standards for low chemical emissions into indoor air during product usage.
SAFE USE	RoHS compliant, US Consumer Product Safety Commission Section 101, ANSI/WCMA A 100.1-2007 for lead content and REACH compliant.
STANDARD USES	Roller shades and panel tracks.
UV PROTECTION	SheerWeave sun control fabrics are an effective way to reduce harmful UV rays. Phifer Incorporated is a proud member of the Skin Cancer Foundation's Corporate Council.
WARRANTY	10-year interior, 5-year exterior.

## TECHNICAL DATA

		SOLAR OPTICAL PROPERTIES								SHGC/G VALUE g-tot (glass & blind)			
		TS%		RS%		AS%		TV%		Single 1/4 CL	Insulating 1HA	Single 1/4 CL	Insulating 1HA
OPENNESS		1%	3%	1%	3%	1%	3%	1%	3%	1%		3%	
COLOR	NUMBER	Rm/St*	Rm/St*	Rm/St*	Rm/St*	Rm/St*	Rm/St*	Rm/St*	Rm/St*	Rm/St*	Rm/St*	Rm/St*	Rm/St*
Chalk	P06	9/9	11/11	83/83	81/81	8/8	8/8	7/7	10/10	0.18/0.18	0.17/0.17	0.19/0.19	0.17/0.17
Chalk / Black	P25	1/1	3/3	22/54	25/56	77/45	72/41	1/1	3/3	0.50/0.33	0.32/0.24	0.49/0.32	0.32/0.23
Chalk / Wheat	P26	6/6	9/9	65/75	65/73	29/19	26/18	6/6	9/9	0.28/0.22	0.22/0.19	0.28/0.23	0.22/0.19
Kettal / Grey	Q07	3/3	4/4	48/37	47/37	49/60	49/59	3/3	5/5	0.37/0.43	0.26/0.29	0.37/0.43	0.26/0.29
Tobacco	Q16	2/2	3/3	8/6	8/6	90/92	89/91	2/2	4/4	0.58/0.59	0.36/0.37	0.58/0.59	0.37/0.37
Flaxen	Q22	3/3	6/6	42/57	43/57	55/40	51/37	3/3	7/7	0.40/0.31	0.27/0.23	0.40/0.32	0.27/0.23
Whitesands	Q23	7/7	9/9	65/67	63/67	28/26	28/24	6/6	8/8	0.28/0.27	0.22/0.21	0.30/0.27	0.23/0.21
Birch	Q25	5/5	7/7	57/64	56/63	38/31	37/30	4/4	7/7	0.32/0.28	0.23/0.22	0.25/0.29	0.24/0.22
Cobblestone	Q26	3/3	4/4	36/55	38/56	61/42	58/40	4/4	4/4	0.43/0.33	0.29/0.24	0.43/0.32	0.29/0.23
Soft Grey	Q27	5/5	8/8	58/58	57/57	37/37	35/35	4/4	8/8	0.31/0.31	0.23/0.23	0.32/0.32	0.23/0.23
Pewter / Chalk	V03	3/3	4/4	56/30	53/29	41/67	43/67	4/4	5/5	0.32/0.46	0.23/0.30	0.34/0.47	0.24/0.30
Ebony	V10	1/1	3/3	5/5	5/5	94/94	92/92	1/1	5/5	0.59/0.59	0.36/0.36	0.60/0.60	0.37/0.37
Slate	V28	2/2	3/3	11/8	12/8	87/90	85/89	3/3	4/4	0.57/0.58	0.36/0.36	0.55/0.58	0.35/0.37

\*Rm/St = Room side / Street side



PRODUCT CERTIFIED FOR  
LOW CHEMICAL EMISSIONS  
UL.COM/GG  
UL 2818



\*TS - Solar Transmittance, RS - Solar Reflectance, AS - Solar Absorptance, TV - Visual Transmittance \*SHGC = Solar Heat Gain Coefficient \*1/4 CL = 1/4" Clear Glass, 1 HA = 1" Heat Absorbing Glass \*Fabrics Installed Internally, Zero-Degree Profile Angle \*Solar Heat Gain Coefficient (SHGC) shown calculated according to Office of Building Technology, State and Community Programs, Energy Efficiency and Renewable Energy, U.S. Department of Energy's definition of SHGC. SHGC represents the percentage of solar heat gain that is transmitted to the interior through the glass and shading system. If you are using glass whose performance is listed in terms of SC, you may convert to SHGC by multiplying the SC by 0.87.



411 S. Pearl Street | Spiceland, IN 47385  
765.987.7999 | 800.238.7999

draperinc.com

For additional information, questions, or to request fabric samples, please contact your Draper sales representative or scan to visit [request.draperinc.com](http://request.draperinc.com)



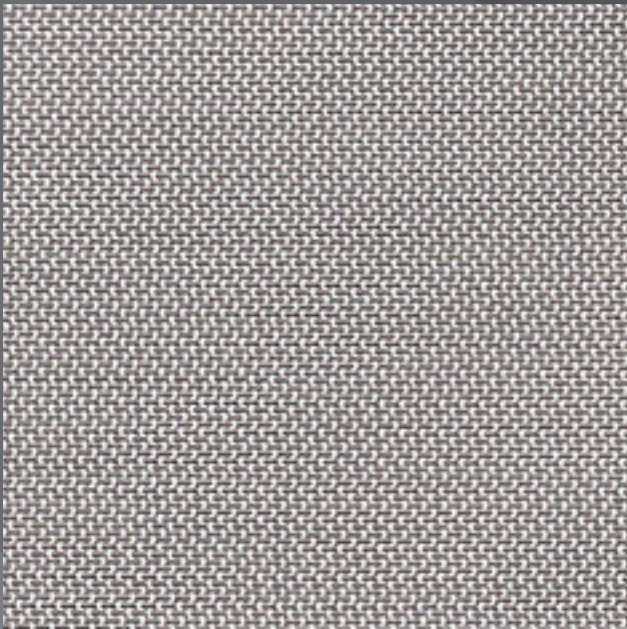
\* SheerWeave is a registered trademark of PHIFER INCORPORATED.  
\* MICROBAN is a registered trademark of Microban Products Company.  
TM UL, the UL logos and the UL mark are trademarks of UL LLC.  
© PHIFER INCORPORATED 0324



# SheerWeave® Style PW4550 / 4650

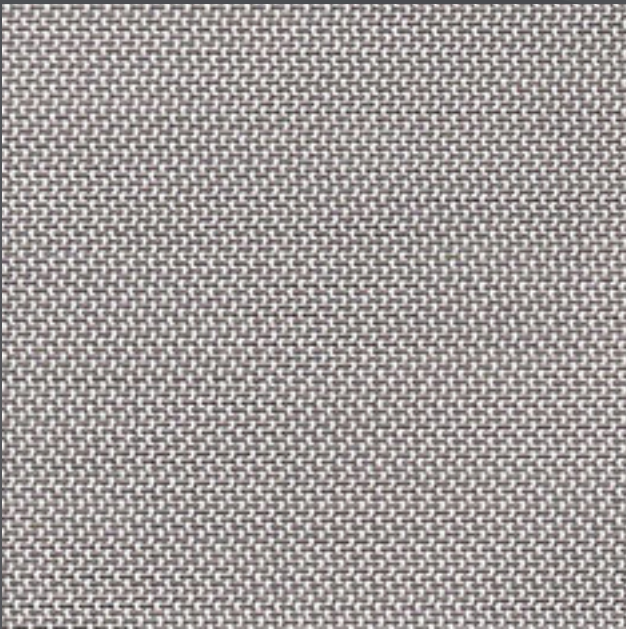


**Style PW4550**  
(5% open)



PW4550 P10 Granite

**Style PW4650**  
(3% open)

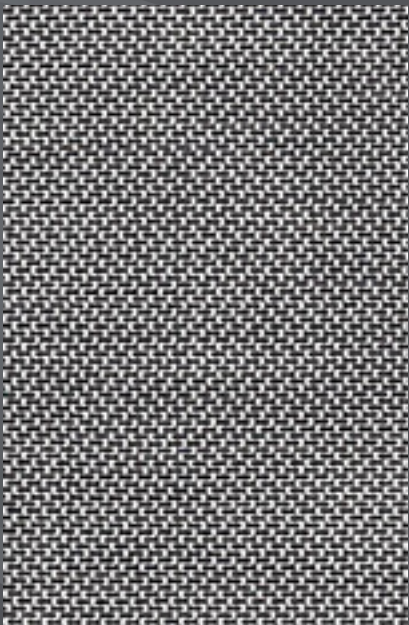


PW4650 P10 Granite

The above styles are also available in the colors shown below.



PW4650 P65 Linen



PW4650 V45 Coal



PW4650 V47 Chestnut

Digital sample of actual colors may vary slightly.



# SheerWeave® Style PW4550 / 4650

Woven from thin and light weight vinyl-coated polyester yarns into a unique twill weave, Styles 4550 and 4650 offer a distinct two-sided appearance that maximizes both outward visibility and solar heat reduction. Style 4550/4650 can also be used in exterior roller shades.

## SHEERWEAVE STYLE PW4550 / 4650

STANDARD WIDTH	63" and 98" (160 cm and 248.9 cm)	FABRIC THICKNESS	<b>PW4550 5%:</b> 0.025 in (0.64 mm) <b>PW4650 3%:</b> 0.026 in (0.66 mm)
ROLL LENGTH	30 Linear Yards (27.4 lm)	OPENNESS FACTOR	<b>PW4550 5%:</b> Approximately 5% <b>PW4650 3%:</b> Approximately 3%
COMPOSITION	17% Polyester / 83% Vinyl on Polyester	UV BLOCKAGE	<b>PW4550 5%:</b> Approximately 95% <b>PW4650 3%:</b> Approximately 97%
MESH WEIGHT	<b>PW4550 5%:</b> 13.0 oz/yd <sup>2</sup> (440.78 g/m <sup>2</sup> ) <b>PW4650 3%:</b> 13.3 oz/yd <sup>2</sup> (450.96 g/m <sup>2</sup> )	ACOUSTICAL VALUE	<b>PW4550 5%:</b> NRC 0.10 / SAA 0.11 <b>PW4650 3%:</b> NRC 0.15 / SAA 0.18
		ACOUSTICAL PERFORMANCE	NRC (Noise Reduction Coefficient) and SAA (Sound Absorption Average) tested in accordance with ASTM C423-09a.

## SPECIFICATIONS

FIRE CLASSIFICATION	California U.S. Title 19 (small scale), NFPA 701 TM#1 (small scale), NFPA 101 (Class A Rating), IBC Section 803.1.1 (Class A Rating), BS 5867 Part 2 Type B Performance, NFPA 701 TM#2 (large scale), CAN/ULC-S 109 (large and small scale).
BACTERIA AND FUNGAL RESISTANCE	ASTM E 2180, ASTM G21, ASTM G22, AATCC30 Part 3, ASTM D 3273, GREENGUARD Mold and Bacteria Standard ASTM 6329; includes Microban antimicrobial additives.
ENVIRONMENTAL CERTIFICATION	Certified to GREENGUARD and GREENGUARD Gold standards for low chemical emissions into indoor air during product usage.
SAFE USE	RoHS Complaint, US Consumer Product Safety Commission Section 101, ANSI/WCMA A 100.1-2007 for lead content and REACH Compliant.
STANDARD USES	Roller shades and panel tracks.
UV PROTECTION	SheerWeave sun control fabrics are an effective way to reduce harmful UV rays. Phifer Incorporated is a proud member of the Skin Cancer Foundation's Corporate Council.
WARRANTY	10-year interior, 5-year exterior

## TECHNICAL DATA

		SOLAR OPTICAL PROPERTIES								SHGC/G VALUE g-tot (glass & blind)			
		TS%		RS%		AS%		TV%		Single 1/4CL	Insulating 1HA	Single 1/4CL	Insulating 1HA
		5%	3%	5%	3%	5%	3%	5%	3%	5%	5%	3%	3%
CODE / COLOR	NUMBER												
Granite	P10	7	6	56	55	37	39	8	8	0.33	0.24	0.33	0.24
Linen	P65	9	7	59	58	32	35	10	8	0.32	0.23	0.31	0.23
Coal	V45	8	5	48	47	44	48	9	7	0.37	0.26	0.37	0.26
Chestnut	V47	9	7	48	48	43	45	11	8	0.37	0.26	0.37	0.26



PRODUCT CERTIFIED FOR  
LOW CHEMICAL EMISSIONS  
UL.COM/GG  
UL 2818



\*TS - Solar Transmittance, RS - Solar Reflectance, AS - Solar Absorptance, TV - Visual Transmittance \*SHGC = Solar Heat Gain Coefficient \*1/4 CL = 1/4" Clear Glass, 1 HA = 1" Heat Absorbing Glass \*Fabrics Installed Internally, Zero-Degree Profile Angle \*Solar Heat Gain Coefficient (SHGC) shown calculated according to Office of Building Technology, State and Community Programs, Energy Efficiency and Renewable Energy, U.S. Department of Energy's definition of SHGC. SHGC represents the percentage of solar heat gain that is transmitted to the interior through the glass and shading system. If you are using glass whose performance is listed in terms of SC, you may convert to SHGC by multiplying the SC by 0.87.



PW4550



PW4650



411 S. Pearl Street | Spiceland, IN 47385  
765.987.7999 | 800.238.7999

draperinc.com

For additional information, questions, or to request fabric samples, please contact your Draper sales representative or scan to visit [request.draperinc.com](http://request.draperinc.com)



**PHIFER**  
INCORPORATED

© SheerWeave is a registered trademark of PHIFER INCORPORATED.  
© MICROBAN is a registered trademark of Microban Products Company.  
TM UL, the UL logos and the UL mark are trademarks of UL LLC.  
© PHIFER INCORPORATED 1124



SheerWeave® Style PW4800  
1% Openness



P06 Chalk



P07 Alabaster



P75 Pearl



Q97 Sand



Q98 Mocha



Q99 Taupe



V10 Ebony



V16 Grey



V59 Fleece



V60 Clay



V61 Mink



V62 Flint

Digital sample of actual colors may vary slightly.



# SheerWeave® Style PW4800 1% Openness

Designed with privacy in mind, Style 4800 is woven in a dense plain weave to limit directional visibility while allowing natural light to enter the room. Woven from vinyl-coated polyester yarns Style 4800 is durable, easy to maintain and high performing with a robust construction that makes it ideal for heavy traffic areas and public spaces. Style 4800 may also be used in exterior shading systems.

## SHEERWEAVE STYLE PW4800

STANDARD WIDTH	63", 98" and 126" (160 cm, 248.9 cm and 320 cm)	FABRIC THICKNESS	0.036 in (0.91 mm)
ROLL LENGTH	30 Linear Yards (27.4 lm)	OPENNESS FACTOR	Approximately 1%
COMPOSITION	24% Polyester, 76% Vinyl on Polyester	UV BLOCKAGE	Approximately 99%
MESH WEIGHT	18.5 oz/yd <sup>2</sup> (627 g/m <sup>2</sup> )	ACOUSTICAL VALUE	NRC 0.30 / SAA 0.31
		ACOUSTICAL PERFORMANCE	NRC (Noise Reduction Coefficient) and SAA (Sound Absorption Average) tested in accordance with ASTM C423-09a.

## SPECIFICATIONS

FIRE CLASSIFICATION	California U.S. Title 19 (small scale), NFPA 701 TM#1 (small scale), NFPA 101 (Class A Rating), IBC Section 803.1.1 (Class A Rating), BS 5867 Part 2 Type B Performance, NFPA 701 TM#2 (large scale), CAN/ ULC-S 109 (large and small scale), CAN/CGSB2-4.162-M80. Fire classifications are subject to change. Please visit phifer.com for the most current information.
BACTERIA AND FUNGAL RESISTANCE	ASTM E 2180, ASTM G21, ASTM G22, AATCC30 Part 3, ASTM D 3273, GREENGUARD Mold and Bacteria Standard ASTM 6329; includes Microban antimicrobial additives.
ENVIRONMENTAL CERTIFICATION	Certified to GREENGUARD and GREENGUARD Gold standards for low chemical emissions into indoor air during product usage.
SAFE USE	RoHS compliant, US Consumer Product Safety Commission Section 101, ANSI/WCMA A 100.1-2007 for lead content and REACH compliant.
STANDARD USES	Roller shades and panel tracks.
UV PROTECTION	SheerWeave sun control fabrics are an effective way to reduce harmful UV rays. Phifer Incorporated is a proud member of the Skin Cancer Foundation's Corporate Council.
WARRANTY	10-year interior, 5-year exterior.

## TECHNICAL DATA

		SOLAR OPTICAL PROPERTIES				SHGC/G VALUE g-tot (glass & blind)	
		TS%	RS%	AS%	TV%	Single 1/4 CL	Insulating 1 HA
OPENNESS 1%							
COLOR	NUMBER						
Chalk	P06	8	77	15	6	0.19	0.18
Alabaster	P07	10	62	28	4	0.30	0.23
Pearl	P75	4	67	29	3	0.26	0.21
Sand	Q97	1	51	48	1	0.35	0.25
Mocha	Q98	0	12	88	1	0.56	0.35
Taupe	Q99	1	41	58	0	0.40	0.28
Ebony	V10	0	3	97	0	0.60	0.37
Grey	V16	4	51	45	2	0.35	0.25
Fleece	V59	0	24	76	1	0.49	0.32
Clay	V60	0	32	68	0	0.44	0.30
Mink	V61	0	7	93	0	0.58	0.37
Flint	V62	0	8	92	0	0.57	0.36



PRODUCT CERTIFIED FOR  
LOW CHEMICAL EMISSIONS  
UL.COM/GG  
UL 2818



\*TS - Solar Transmittance, RS - Solar Reflectance, AS - Solar Absorptance, TV - Visual Transmittance \*SHGC = Solar Heat Gain Coefficient \*1/4 CL = 1/4" Clear Glass, 1 HA = 1" Heat Absorbing Glass \*Fabrics Installed Internally, Zero-Degree Profile Angle \*Solar Heat Gain Coefficient (SHGC) shown calculated according to Office of Building Technology, State and Community Programs, Energy Efficiency and Renewable Energy, U.S. Department of Energy's definition of SHGC. SHGC represents the percentage of solar heat gain that is transmitted to the interior through the glass and shading system. If you are using glass whose performance is listed in terms of SC, you may convert to SHGC by multiplying the SC by 0.87.



411 S. Pearl Street | Spiceland, IN 47385  
765.987.7999 | 800.238.7999  
draperinc.com

For additional information, questions, or to request fabric samples, please contact your Draper sales representative or scan to visit [request.draperinc.com](https://request.draperinc.com)



**PHIFER**  
INCORPORATED

© SheerWeave is a registered trademark of PHIFER INCORPORATED.  
© MICROBAN is a registered trademark of Microban Products Company.  
TM UL, the UL logos and the UL mark are trademarks of UL LLC.  
© PHIFER INCORPORATED 1124





STYLE  
3000

---

WEAVING  
EXCELLENCE  
WITH  
INNOVATION



		SOLAR OPTICAL PROPERTIES				SHGC/G VALUE g-tot (glass & blind)	
Code	Color	TS	RS	AS	TV	SINGLE 1/4 CL	INSULATING 1 HA
<b>STYLE 3000 - 14%</b>							
P01	Pearl White	24	62	14	21	0.33	0.23
Q01	Mushroom Sand	22	45	33	21	0.42	0.28
Q02	Custard Cream	23	53	24	22	0.37	0.26
Q04	Chocolate	13	4	83	15	0.63	0.38
Q17	Sand Dollar	17	46	37	15	0.41	0.27
Q18	Espresso	15	9	76	16	0.60	0.37
Q19	Honey Sage	16	31	53	16	0.49	0.31
V01	Pale Grey	19	40	41	19	0.44	0.29
V02	Ninja Grey	12	8	80	14	0.60	0.37



PROTECTION THAT LIVES ON  
**MICROBAN®**

Microban® antimicrobial protection inhibits the growth of stain-causing bacteria, mold and mildew on the shade.



PRODUCT CERTIFIED FOR  
LOW CHEMICAL EMISSIONS  
UL.COM/GG  
UL 2818



TS = Solar Transmittance  
RS = Solar Reflectance  
AS = Solar Absorptance  
TV = Visual Transmittance

SHGC = Solar Heat Gain Coefficient

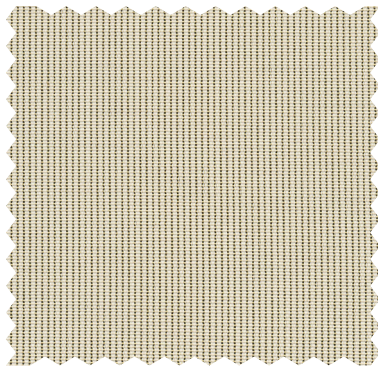
1/4 CL = 1/4" Clear Glass  
1 HA = 1" Heat Absorbing Glass

Fabrics Installed Internally  
Zero-Degree Profile Angle

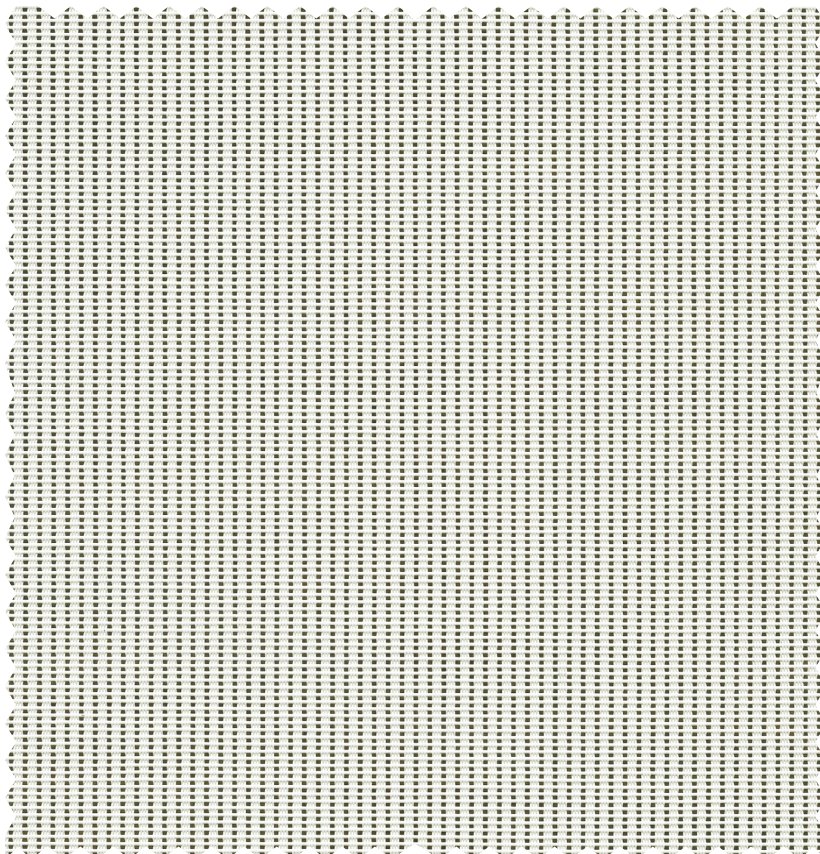
For additional performance values,  
test references and technical  
definitions visit us at [phifer.com](http://phifer.com).



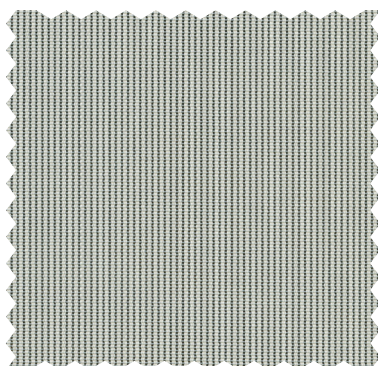
Q02 **Custard Cream**



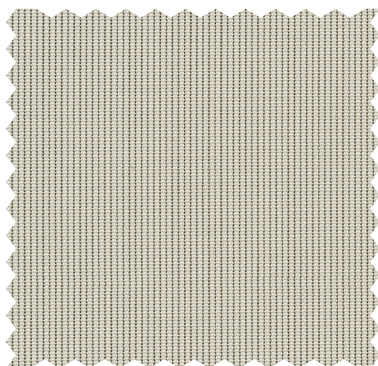
P01 **Pearl White**



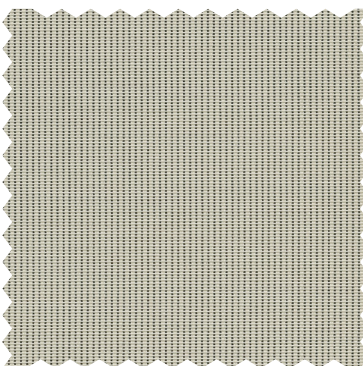
V01 **Pale Grey**



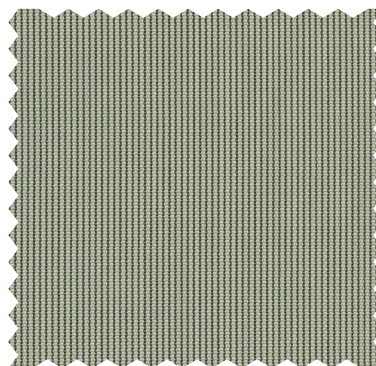
Q01 **Mushroom Sand**



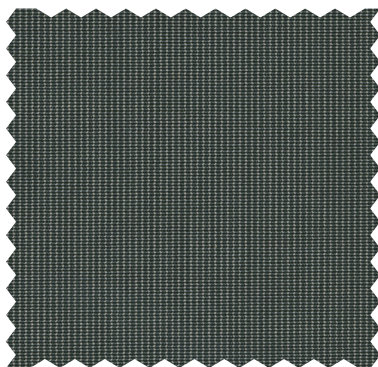
Q17 **Sand Dollar**



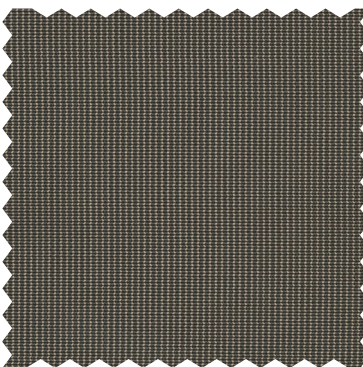
Q19 **Honey Sage**



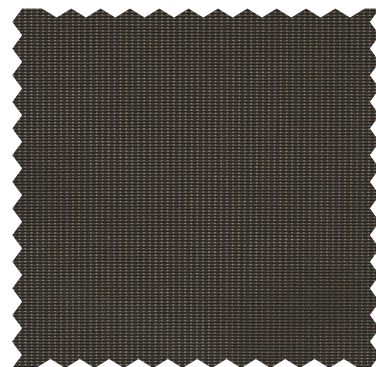
V02 **Ninja Grey**



Q18 **Espresso**



Q04 **Chocolate**





# STYLE 3000 SPECIFICATIONS

Combining vinyl coated fiberglass and polyester yarns, Style 3000 is woven into a unique rib weave for a distinct look and color palette. The 14% openness of Style 3000 lets in more natural light while providing excellent outward visibility. Style 3000 can also be used in exterior shading systems.

<b>FIRE CLASSIFICATION</b>	NFPA 701 TM#1 (small scale) NFPA 701 TM#2 (large scale)	NFPA 101 (Class A Rating) IBC Section 803.1.1 (Class A Rating)
<i>Fire classifications are subject to change. Please go to <a href="http://phifer.com">phifer.com</a> for the most current information.</i>		
<b>BACTERIA AND FUNGAL RESISTANCE</b>	ASTM E 2180      ASTM G21      AATCC30 Part 3 GREENGUARD Mold and Bacteria Standard ASTM 6329 Includes Microban antimicrobial additives	ASTM D 3273      ASTM G22
<b>ENVIRONMENTAL CERTIFICATION</b>	GREENGUARD      GREENGUARD Gold Certified to these standards for low chemical emissions into indoor air during product usage	
<b>SAFE USE</b>	RoHS Compliant ANSI/WCMA A 100.1-2007 for lead content	REACH Compliant US Consumer Product Safety Commission Section 101
<b>WARRANTY</b>	10-year interior      5-year exterior	
<b>UV PROTECTION</b>	SheerWeave sun control fabrics are an effective way to reduce harmful UV rays. Phifer Incorporated is a proud member of the Skin Cancer Foundation's Corporate Council.	
<b>TRACKLESS</b>	TrackLess Technology minimizes the fiberglass yarns' inherent tendencies to track when being rolled up in a shade. With TrackLess Technology these same fabrics now track less, roll up straighter and reduce shade fabrication time.	

<b>STYLE</b>	<b>3000</b>
<b>WIDTHS</b>	72" and 96" 182.9 cm and 243.8 cm
<b>ROLL LENGTH</b>	30 Linear Yards 27.4 Linear Meters
<b>COMPOSITION</b>	35% Fiberglass, 65% Vinyl on Fiberglass 31% Polyester, 69% Vinyl on Polyester
<b>MESH WEIGHT</b>	13.46 oz/yd <sup>2</sup> 456 g/m <sup>2</sup>
<b>FABRIC THICKNESS</b>	0.028 in 0.71 mm
<b>OPENNESS FACTOR</b>	Approximately 14%
<b>UV BLOCKAGE</b>	Approximately 86%

**PHIFER**  
INCORPORATED

P. O. Box 1700 • Tuscaloosa, Alabama 35403-1700 USA  
Phone: 205.345.2120 • FAX: 205.391.0799  
Toll Free USA/Canada: 1.800.221.5497  
[phifer.com](http://phifer.com) • ISO Registered



© SheerWeave is a registered trademark of PHIFER INCORPORATED.  
® MICROBAN is a registered trademark of Microban Products Company.  
TM UL, the UL logos and the UL mark are trademarks of UL LLC.  
Photo courtesy of Hunter Douglas, USA.  
© PHIFER INCORPORATED V24 030624 3033838





## STYLE 7200R / 7250R

RESIDENTIAL

7200R - BLACKOUT FABRIC  
7250R - LIGHT-FILTERING FABRIC

---

WEAVING  
EXCELLENCE  
WITH  
INNOVATION



		SOLAR OPTICAL PROPERTIES				SHGC/G VALUE g-tot (glass & blind)	
Code	Color	TS	RS	AS	TV	SINGLE 1/4 CL	INSULATING 1 HA
<b>STYLE 7200R - BLACKOUT</b>							
RB1	Swan	0	71	29	0	0.23	0.19
RB8	Raven	0	70	30	0	0.23	0.20



PRODUCT CERTIFIED FOR  
LOW CHEMICAL EMISSIONS  
UL.COM/GG  
UL 2818



MIF Seal of Approval



TS = Solar Transmittance  
RS = Solar Reflectance  
AS = Solar Absorptance  
TV = Visual Transmittance

SHGC = Solar Heat Gain Coefficient

1/4 CL = 1/4" Clear Glass  
1 HA = 1" Heat Absorbing Glass

Fabrics Installed Internally  
Zero-Degree Profile Angle

For additional performance values,  
test references and technical  
definitions visit us at [phifer.com](http://phifer.com).





STYLE  
7200R

RB1  
**Swan**

RB2  
**Oyster**

RB3  
**Sail**

RB4  
**Chiffon**

RB6  
**Earl Grey**

RB5  
**Chrome**

RB7  
**Blazer**

RB8  
**Raven**



STYLE  
7250R

RL1  
**Swan**

RL2  
**Oyster**

RL3  
**Sail**

RL4  
**Chiffon**

RL6  
**Earl Grey**

RL5  
**Chrome**

RL7  
**Blazer**

RL8  
**Raven**

# STYLE 7200R / 7250R SPECIFICATIONS

Whether contemporary or traditional, Style 7200R complements any design scheme, combining total light blockage with a neutral yet subtly variegated pattern. Style 7250R offers a light-filtering option, using the same face fabric and pattern of Style 7200R to allow natural light to brighten interior spaces.

These fabrics are suitable for roller shades, Roman shades and panel track systems and are ideal for residential use.

**STYLE 7200R FIRE CLASSIFICATION** California Technical Bulletin 117 IBC Section 803.1.1 (Class B Rating)  
NFPA 101 (Class B Rating)

**STYLE 7250R FIRE CLASSIFICATION** California Technical Bulletin 117 IBC Section 803.1.1 (Class A Rating)  
NFPA 101 (Class A Rating)

*Fire classifications are subject to change. Please go to [phifer.com](http://phifer.com) for the most current information.*

**BACTERIA AND FUNGAL RESISTANCE** ASTM G21 ASTM E 2180

**ENVIRONMENTAL CERTIFICATION** GREENGUARD GREENGUARD Gold  
Certified to these standards for low chemical emissions into indoor air during product usage

**SAFE USE** ANSI/WCMA A 100.1-2007 for lead content US Consumer Product Safety Commission Section 101  
RoHS/Directive 2002/95/EC

**WARRANTY** 5-year interior

**UV PROTECTION** Seal of Approval by the Melanoma International Foundation (MIF) for effectiveness in preventing sun damage to the skin or eyes

**CLEANING INSTRUCTIONS** Fabric should be regularly dusted/vacuumed as appropriate. If commercial spot cleaners are used, they must first be tested and allowed to dry on an inconspicuous area to ensure compatibility.

*Railroading this fabric is not recommended.*

*Colors may vary slightly from swatch samples. All variations are within industry standards.*

STYLE	7200R	7250R
<b>WIDTHS</b>	118" 300 cm	118" 300 cm
<b>ROLL LENGTH</b>	22 Linear Yards 20 Linear Meters	22 Linear Yards 20 Linear Meters
<b>COMPOSITION</b>	100% Polyester with Acrylic Flocked Backing	100% Polyester with Acrylic Flocked Backing
<b>MESH WEIGHT</b>	11.06 oz/yd <sup>2</sup> 375 g/m <sup>2</sup>	6.19 oz/yd <sup>2</sup> 210 g/m <sup>2</sup>
<b>FABRIC THICKNESS</b>	0.024 in 0.60 mm	0.018 in 0.45 mm
<b>OPENNESS FACTOR</b>	Opaque	Light-filtering

**PHIFER**  
INCORPORATED

P. O. Box 1700 • Tuscaloosa, Alabama 35403-1700 USA  
Phone: 205.345.2120 • FAX: 205.391.0799  
Toll Free USA/Canada: 1.800.221.5497  
[phifer.com](http://phifer.com) • ISO Registered



© SheerWeave is a registered trademark of PHIFER INCORPORATED.  
™ UL, the UL logos and the UL mark are trademarks of UL LLC.  
Photo courtesy of Blind Design, South Africa  
© PHIFER INCORPORATED V21 042021 3038201





STYLE  
7700R / 7750R

RESIDENTIAL

7700R - BLACKOUT FABRIC  
7750R - LIGHT-FILTERING FABRIC

---

WEAVING  
EXCELLENCE  
WITH  
INNOVATION



		SOLAR OPTICAL PROPERTIES				SHGC/G VALUE g-tot (glass & blind)	
Code	Color	TS	RS	AS	TV	SINGLE 1/4 CL	INSULATING 1 HA
<b>STYLE 7700R - BLACKOUT</b>							
TB1	Crystal	0	70	30	0	0.24	0.19
TB2	Sand	0	57	43	0	0.31	0.23
TB3	Concrete	0	44	56	0	0.38	0.27
TB4	Chalk	0	59	41	0	0.30	0.23
TB5	Graphite	0	44	56	0	0.38	0.26
TB6	Pewter	0	22	78	0	0.50	0.32
TB7	Onyx	0	6	94	0	0.58	0.37



PRODUCT CERTIFIED FOR  
LOW CHEMICAL EMISSIONS  
UL.COM/GG  
UL 2818



TS = Solar Transmittance  
RS = Solar Reflectance  
AS = Solar Absorptance  
TV = Visual Transmittance

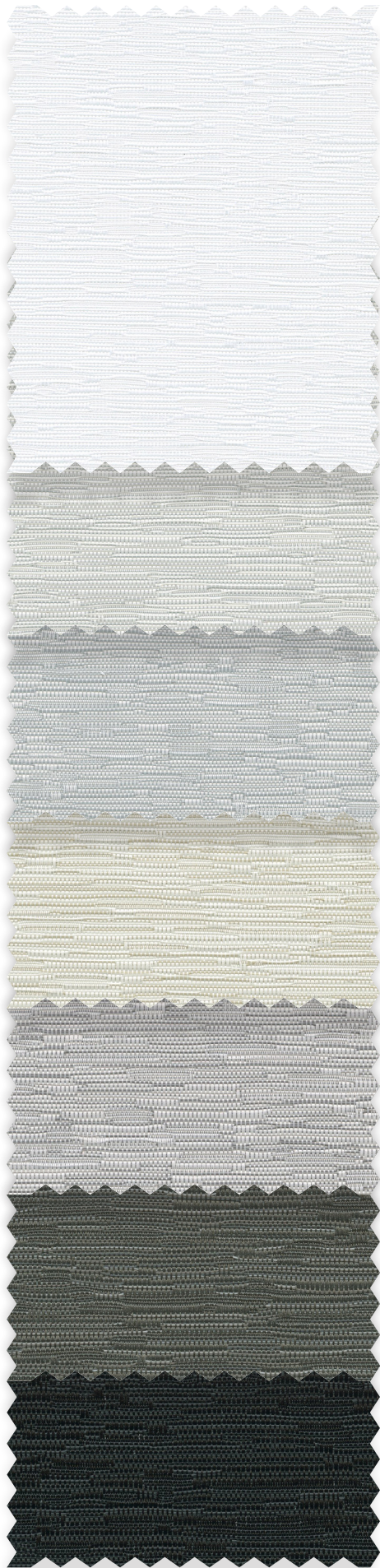
SHGC = Solar Heat Gain Coefficient

1/4 CL = 1/4" Clear Glass  
1 HA = 1" Heat Absorbing Glass

Fabrics Installed Internally  
Zero-Degree Profile Angle

For additional performance values,  
test references and technical  
definitions visit us at [phifer.com](http://phifer.com).





STYLE  
7700R

TB1  
**Crystal**

TB4  
**Chalk**

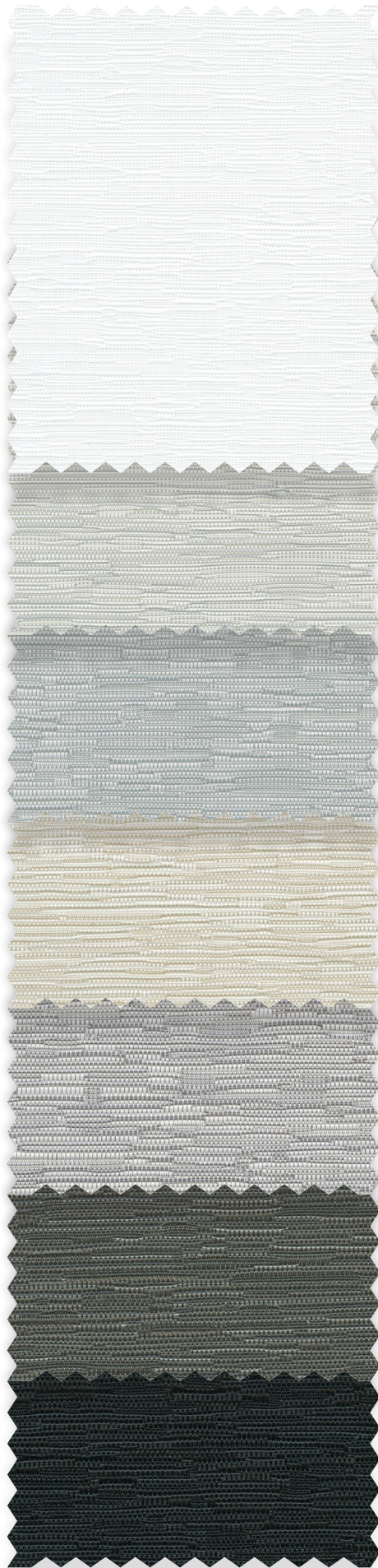
TB3  
**Concrete**

TB2  
**Sand**

TB5  
**Graphite**

TB6  
**Pewter**

TB7  
**Onyx**



STYLE  
7750R

TL1  
**Crystal**

TL4  
**Chalk**

TL3  
**Concrete**

TL2  
**Sand**

TL5  
**Graphite**

TL6  
**Pewter**

TL7  
**Onyx**

# STYLE 7700R / 7750R SPECIFICATIONS

Featuring a soft, textured pattern evoking the look of grasscloth, Style 7700R offers a PVC-free blackout option for total light blockage. Style 7750R filters natural light while maintaining the look of the face fabric of Style 7700R. A color-coordinated backing ensures the same neutral fabric color is shown toward both the interior of the room and glass.

These fabrics are suitable for roller shades, Roman shades and panel track systems and are ideal for residential use.

**STYLE 7700R FIRE CLASSIFICATION** California Technical Bulletin 117

**STYLE 7750R FIRE CLASSIFICATION** California Technical Bulletin 117 IBC Section 803.1.1 (Class A Rating)  
NFPA 101 (Class A Rating)

*Fire classifications are subject to change. Please go to [phifer.com](http://phifer.com) for the most current information.*

**BACTERIA AND FUNGAL RESISTANCE** ASTM G21 ASTM E 2180

**ENVIRONMENTAL CERTIFICATION** GREENGUARD GREENGUARD Gold  
Certified to these standards for low chemical emissions into indoor air during product usage

**SAFE USE** ANSI/WCMA A 100.1-2007 for lead content US Consumer Product Safety Commission Section 101  
RoHS Compliant

**WARRANTY** 5-year interior

**UV PROTECTION** SheerWeave sun control fabrics are an effective way to reduce harmful UV rays. Phifer Incorporated is a proud member of the Skin Cancer Foundation's Corporate Council.

**CLEANING INSTRUCTIONS** Fabric should be regularly dusted/vacuumed as appropriate. If commercial spot cleaners are used, they must first be tested and allowed to dry on an inconspicuous area to ensure compatibility.

*Railroading this fabric is not recommended.*

*Colors may vary slightly from swatch samples. All variations are within industry standards.*

STYLE	7700R	7750R
<b>WIDTHS</b>	118" 300 cm	118" 300 cm
<b>ROLL LENGTH</b>	22 Linear Yards 20 Linear Meters	22 Linear Yards 20 Linear Meters
<b>COMPOSITION</b>	100% Polyester with Acrylic Foamed Backing	100% Polyester with Acrylic Coating
<b>MESH WEIGHT</b>	13.6 oz/yd <sup>2</sup> 461 g/m <sup>2</sup>	8.8 oz/yd <sup>2</sup> 298 g/m <sup>2</sup>
<b>FABRIC THICKNESS</b>	0.028 in 0.71 mm	0.023 in 0.58 mm
<b>OPENNESS FACTOR</b>	Opaque	Light-filtering
<b>ACOUSTICAL VALUE</b>	NRC .05 / SAA .04	NRC .55 / SAA .57

**PHIFER**  
INCORPORATED

P. O. Box 1700 • Tuscaloosa, Alabama 35403-1700 USA  
Phone: 205.345.2120 • FAX: 205.391.0799  
Toll Free USA/Canada: 1.800.221.5497  
[phifer.com](http://phifer.com) • ISO Registered



© SheerWeave is a registered trademark of PHIFER INCORPORATED.  
™ UL, the UL logos and the UL mark are trademarks of UL LLC.  
Photo courtesy of Blind Design, South Africa  
© PHIFER INCORPORATED V21 050823 3038202



# SheerWeave® Style SW7400 / 7450

Room Darkening and Privacy Fabrics



**Style 7400**  
Room Darkening



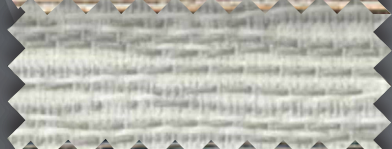
U80 Cotton



U81 Parchment



U82 Sesame



U83 Pebble



U84 Seagrass



U85 Shale



U86 Spice



U87 Flint

**Style 7450**  
Privacy



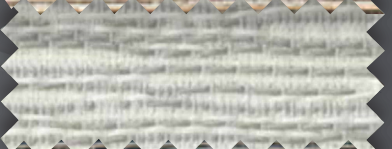
U80 Cotton



U81 Parchment



U82 Sesame



U83 Pebble



U84 Seagrass



U85 Shale



U86 Spice



U87 Flint

Digital sample of actual colors may vary slightly.



# SheerWeave® Style SW7400 / 7450

A picture of refined elegance, Style 7400 layers a subtle textured pattern over a soft, luxurious opaque backing for room darkening. Offering the face fabric of Style 7400, Style 7450 filters natural light while illuminating interior spaces and providing privacy. These fabrics are suitable for roller shades, and panel track systems.

## SHEERWEAVE STYLE SW7400 / 7450

STANDARD WIDTH	118" (300cm)	FABRIC THICKNESS	<b>7400:</b> 0.029 in (0.74 mm)	<b>7450:</b> 0.026 in (0.66 mm)
ROLL LENGTH	30 Linear Yards (27.4 lm)	OPENNESS FACTOR	<b>7400:</b> Room Darkening/Opaque	<b>7450:</b> Privacy/Light-Filtering
COMPOSITION	<b>7400:</b> 100% Polyester with Acrylic Foamed Backing <b>7450:</b> 100% Polyester with Acrylic Coating	ACOUSTICAL VALUE	<b>7400:</b> NRC 0.05 / SAA 0.03	<b>7450:</b> NRC 0.25 / SAA 0.25
MESH WEIGHT	<b>7400:</b> 12.53 oz/yd <sup>2</sup> (425 g/m <sup>2</sup> ) <b>7450:</b> 6.54 oz/yd <sup>2</sup> (221 g/m <sup>2</sup> )	ACOUSTICAL PERFORMANCE	NRC (Noise Reduction Coefficient) and SAA (Sound Absorption Average) tested in accordance with ASTM C423-09a.	

## SPECIFICATIONS

FIRE CLASSIFICATION	NFPA 701 TM#1 (small scale), NFPA 701 TM#2 (large scale), NFPA 101 (Class A Rating), California U.S. Title 19 (small scale), BS 5867 Part 2 Type B Performance, CAN/ULC-S 109 (large and small scale), CAN/CGSB2-4.162-M80, IBC Section 803.1.1 (Class A Rating). Fire classifications are subject to change. Please visit <a href="http://phifer.com">phifer.com</a> for the most current information.
BACTERIA AND FUNGAL RESISTANCE	ASTM G21, ASTM E 2180
ENVIRONMENTAL CERTIFICATION	Certified to GREENGUARD and GREENGUARD Gold standards for low chemical emissions into indoor air during product usage.
SAFE USE	RoHS Compliant, ANSI/WCMA A 100.1-2007 for lead content, US Consumer Product Safety Commission Section 101.
STANDARD USES	Roller shades & panel tracks.
UV PROTECTION	SheerWeave sun control fabrics are an effective way to reduce harmful UV rays. Phifer Incorporated is a proud member of the Skin Cancer Foundation's Corporate Council.
WARRANTY	5-year interior.
COLOR STATEMENT	Colors may vary slightly from swatch samples. All variations are within industry standards.

## TECHNICAL DATA

		SOLAR OPTICAL PROPERTIES				SHGC/G VALUE g-tot (glass & blind)	
		TS%	RS%	AS%	TV%	Single 1/4 CL	Insulating 1HA
COLOR	NUMBER						
Cotton	U80	0	64	36	0	0.27	0.21
Parchment	U81	0	64	36	0	0.27	0.21
Sesame	U82	0	64	36	0	0.27	0.21
Pebble	U83	0	64	36	0	0.27	0.21
Seagrass	U84	0	64	36	0	0.27	0.21
Shale	U85	0	64	36	0	0.27	0.21
Spice	U86	0	64	36	0	0.27	0.21
Flint	U87	0	64	36	0	0.27	0.21

## CLEANING INSTRUCTIONS

Fabric should be regularly dusted/vacuumed as appropriate. If commercial spot cleaners are used, they must first be tested and allowed to dry on an inconspicuous area to ensure compatibility.

**NOTE: Railroading this fabric is not recommended.**



PRODUCT CERTIFIED FOR  
LOW CHEMICAL EMISSIONS  
UL.COM/GG  
UL 2818



Style 7400

\*TS - Solar Transmittance, RS - Solar Reflectance, AS - Solar Absorptance, TV - Visual Transmittance \*SHGC = Solar Heat Gain Coefficient \*1/4 CL = 1/4" Clear Glass, 1 HA = 1" Heat Absorbing Glass \*Fabrics Installed Internally, Zero-Degree Profile Angle \*Solar Heat Gain Coefficient (SHGC) shown calculated according to Office of Building Technology, State and Community Programs, Energy Efficiency and Renewable Energy, U.S. Department of Energy's definition of SHGC. SHGC represents the percentage of solar heat gain that is transmitted to the interior through the glass and shading system. If you are using glass whose performance is listed in terms of SC, you may convert to SHGC by multiplying the SC by 0.87.



411 S. Pearl Street | Spiceland, IN 47385  
765.987.7999 | 800.238.7999

[draperinc.com](http://draperinc.com)

For additional information, questions, or to request fabric samples, please contact your Draper sales representative or scan to visit [request.draperinc.com](http://request.draperinc.com)



**PHIFER**  
INCORPORATED

® SheerWeave is a registered trademark of PHIFER INCORPORATED.  
® MICROBAN is a registered trademark of Microban Products Company.  
TM UL, the UL logos and the UL mark are trademarks of UL LLC.  
© PHIFER INCORPORATED 0324



# PHIFER

EXTERIOR SUN CONTROL  
FABRIC

SUNTEX<sup>®</sup> 95/97

---

WEAVING  
EXCELLENCE  
WITH  
INNOVATION



# SunTex® 95/97

BY PHIFER

SOLAR OPTICAL PROPERTIES					SHGC/G VALUE g-tot (glass & blind)					
Color	TS	RS	AS	TV	SINGLE			INSULATING		
					1/8 CL	1/4 CL	1/4 HA	1/2 CL	1 CL	1 HA

## SUNTEX® 95 Zero Degree Profile Angle • Fabrics Installed Externally

Carbon	6	10	84	10	0.14	0.14	0.13	0.10	0.10	0.10
Stucco	14	48	38	13	0.16	0.16	0.15	0.14	0.14	0.12
White	17	70	13	16	0.17	0.17	0.16	0.15	0.14	0.12
White/Grey	12	54	34	12	0.14	0.14	0.13	0.12	0.12	0.10
Sand	12	44	44	7	0.15	0.15	0.14	0.13	0.12	0.11
Alpaca	11	39	50	11	0.15	0.15	0.14	0.12	0.12	0.10
Chestnut	11	39	50	9	0.15	0.15	0.14	0.12	0.12	0.11
Mocha	8	22	70	9	0.40	0.14	0.11	0.11	0.11	0.10
Dark Bronze	8	5	87	11	0.16	0.16	0.16	0.12	0.12	0.11
Black	7	3	90	10	0.16	0.16	0.15	0.12	0.12	0.11

## SUNTEX® 97 Zero Degree Profile Angle • Fabrics Installed Externally

Carbon	4	11	85	4	0.12	0.12	0.12	0.09	0.09	0.08
Stucco	10	50	40	6	0.13	0.13	0.12	0.11	0.11	0.09
White	15	76	9	12	0.15	0.15	0.14	0.13	0.13	0.10
White/Grey	9	51	40	7	0.12	0.12	0.11	0.10	0.10	0.09
Sand	9	46	45	5	0.13	0.13	0.12	0.10	0.10	0.09
Alpaca	9	44	47	4	0.13	0.13	0.12	0.11	0.10	0.09
Chestnut	7	37	56	4	0.12	0.12	0.11	0.10	0.09	0.09
Mocha	4	22	74	3	0.11	0.11	0.11	0.08	0.08	0.08
Dark Bronze	3	5	92	3	0.12	0.12	0.12	0.09	0.09	0.08
Black	3	4	93	3	0.12	0.12	0.12	0.09	0.09	0.09

PROTECTION THAT LIVES ON  
**MICROBAN®**  
Microban® antimicrobial protection inhibits the growth of stain-causing bacteria, mold and mildew on the shade.



MIF SEAL OF APPROVAL



TS = Solar Transmittance  
RS = Solar Reflectance  
AS = Solar Absorptance  
TV = Visual Transmittance

SHGC = Solar Heat Gain Coefficient

1/8 CL = 1/8" Clear Glass  
1/4 CL = 1/4" Clear Glass  
1/4 HA = 1/4" Heat Absorbing Glass  
1/2 CL = 1/2" Insulating Clear Glass  
1 CL = 1" Insulating Clear Glass  
1 HA = 1" Insulating Heat Absorbing Glass

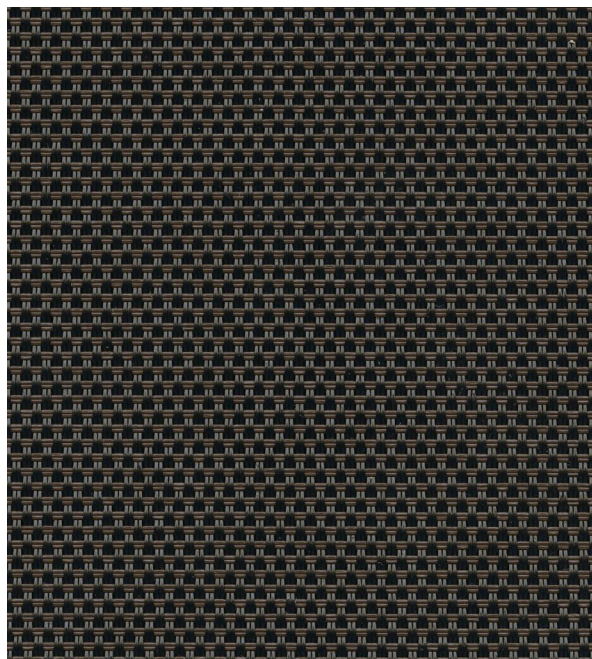
The solar optical properties are used to calculate the solar heat gain coefficient (SHGC). The SHGC represents the percentage of solar heat gain that is transmitted to the interior through the glass and shading system. Dark colors provide maximum glare reduction and visibility.

For additional performance values, test references and technical definitions visit us at [phifer.com](http://phifer.com).



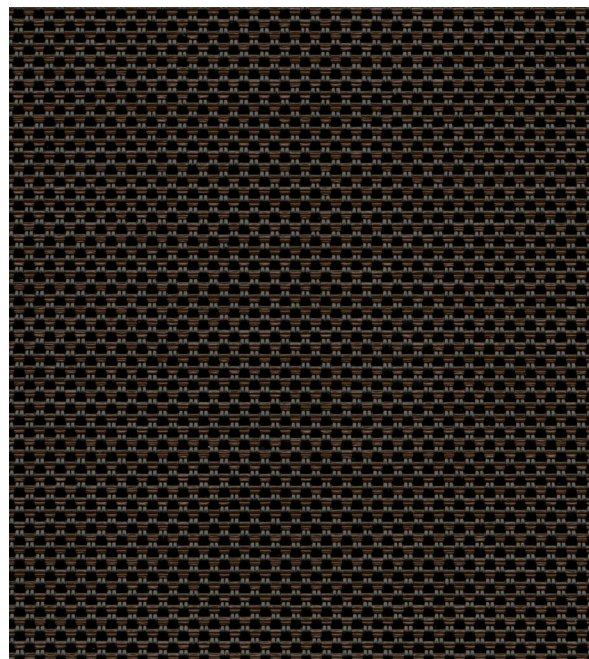
## SUNTEX 95

**Dark Bronze**



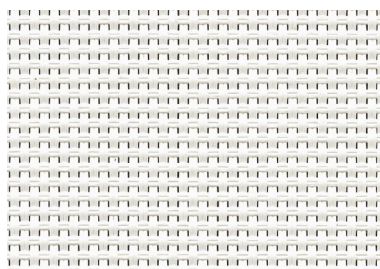
## SUNTEX 97

**Dark Bronze**

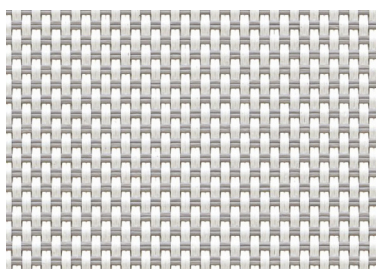


SUNTEX 95 and SUNTEX 97 are also available in the colors shown below.

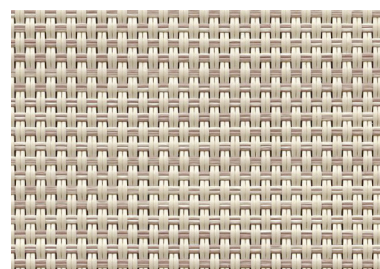
**White**



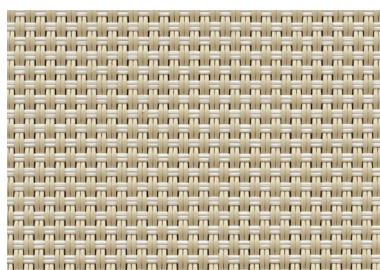
**White/Grey**



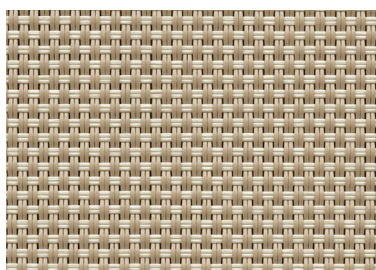
**Stucco**



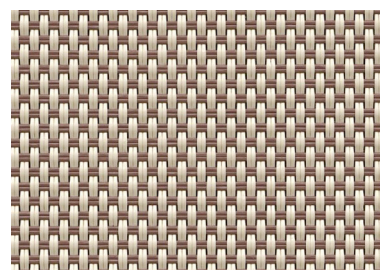
**Sand**



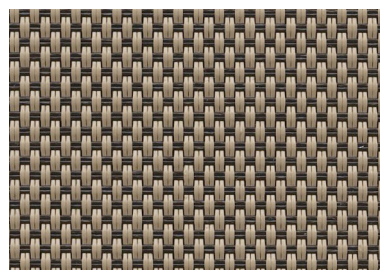
**Alpaca**



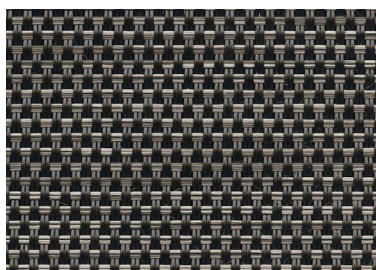
**Chestnut**



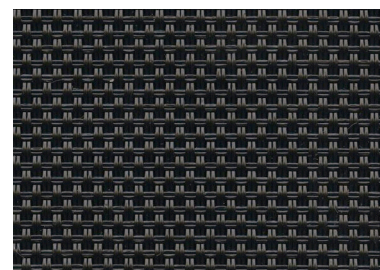
**Mocha**



**Carbon**



**Black**



\*Colors may vary based on individual computer settings and should only be used for general reference.

# SUNTEX 95/97 SPECIFICATIONS

SunTex 95/97, engineered for exterior roller shade applications, is a full basketweave vinyl-coated polyester fabric that is thinner and lighter weight than traditional SunTex. SunTex 95/97 also offers increased heat and glare control as well as daytime privacy.

<b>FIRE CLASSIFICATION</b>	California Technical Bulletin 117 IBC Section 803.1.1 (Class A Rating)	NFPA 101 (Class A Rating)
<b>BACTERIA AND FUNGAL RESISTANCE</b>	ASTM E 2180 Includes Microban antimicrobial additives	ASTM G21
<b>ENVIRONMENTAL CERTIFICATION</b>	GREENGUARD Certified to these standards for low chemical emissions into indoor air during product usage	GREENGUARD Gold
<b>SAFE USE</b>	RoHS/Directive 2002/95/EC ANSI/WCMA A 100.1-2007 for lead content US Consumer Product Safety Commission Section 101 REACH (EC 1907/2006) compliant	
<b>WARRANTY</b>	10-year exterior	
<b>UV PROTECTION</b>	Seal of Approval by the Melanoma International Foundation (MIF) for effectiveness in preventing sun damage to the skin or eyes	

SUNTEX	95	97 <small>NEW</small>
<b>WIDTHS</b>	126" 320 cm	126" 320 cm
<b>ROLL LENGTH</b>	90 Linear Feet 27.43 Linear Meters	90 Linear Feet 27.43 Linear Meters
<b>COMPOSITION</b>	28% Polyester, 72% Vinyl on Polyester	28% Polyester, 72% Vinyl on Polyester
<b>MESH WEIGHT</b>	15.1 oz/yd <sup>2</sup> 511.98 g/m <sup>2</sup>	16.0 oz/yd <sup>2</sup> 542.49 g/m <sup>2</sup>
<b>FABRIC THICKNESS</b>	0.029 in 0.737 mm	0.033 in 0.838 mm
<b>OPENNESS FACTOR</b>	Approximately 5%	Approximately 3%
<b>UV BLOCKAGE</b>	Approximately 95%	Approximately 97%
<b>BREAKING STRENGTH (LBS)</b>	350 Warp, 235 Fill	350 Warp, 298 Fill
<b>STIFFNESS (MG)</b>	524 Warp, 386 Fill	535 Warp, 433 Fill



P. O. Box 1700 • Tuscaloosa, Alabama 35403 -1700 USA  
Phone: 205.345.2120 • FAX: 205.391.0799  
Toll Free USA/Canada: 1.800.221.5497  
phifer.com • ISO Registered



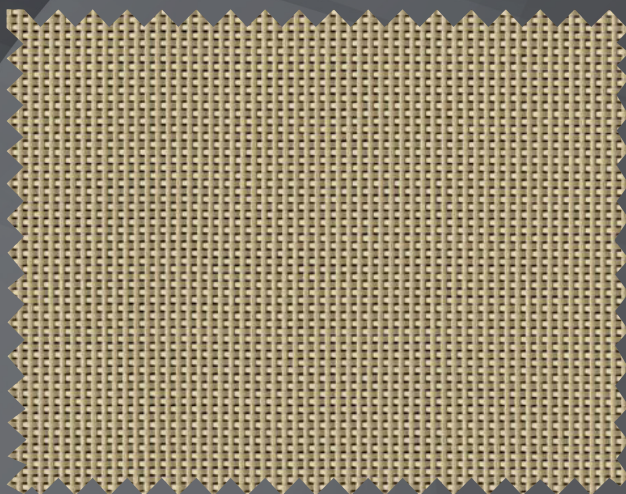
© SunTex is a registered trademark of PHIFER INCORPORATED.  
© MICROBAN is a registered trademark of Microban Products Company.  
™ UL, the UL logos and the UL mark are trademarks of UL LLC.  
© PHIFER INCORPORATED V20-040720 3030867



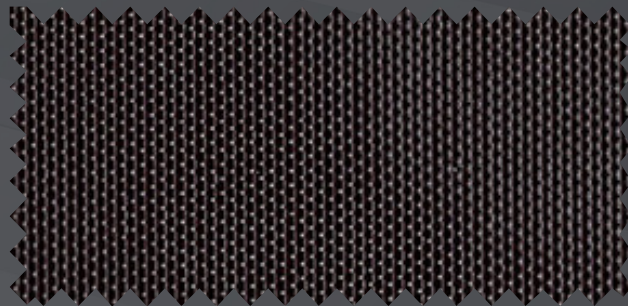
# SunTex® 80/90

Outdoor Fabric

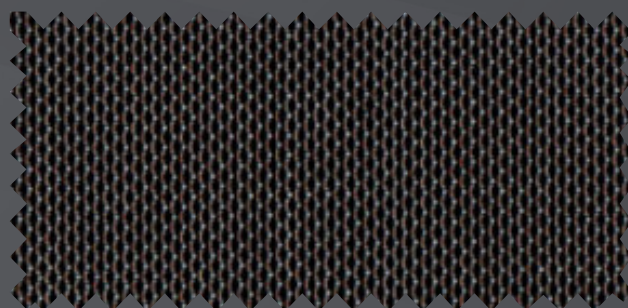
**SunTex®**  
BY PHIFER



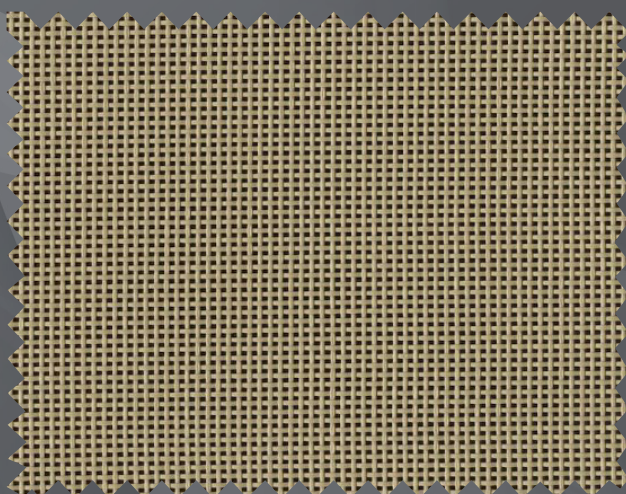
SunTex 90 Beige



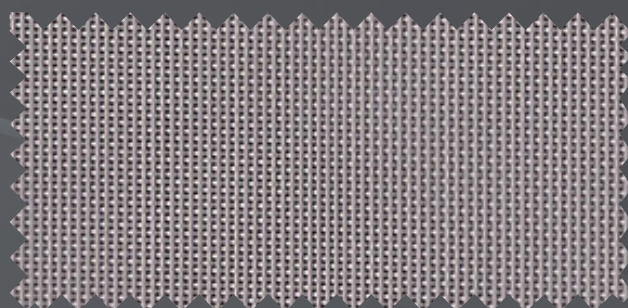
SunTex 80 Brown



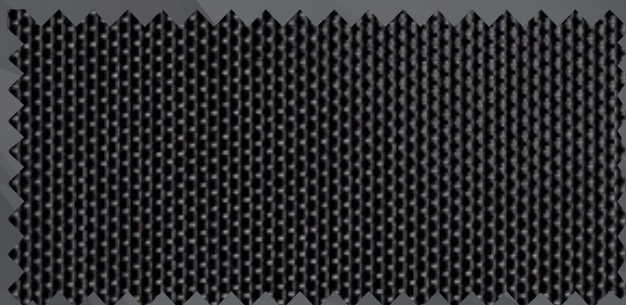
SunTex 80 Dark Bronze



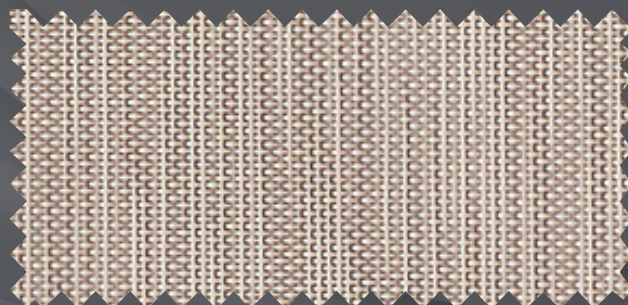
SunTex 80 Beige



SunTex 80 Grey



SunTex 80 Black



SunTex 80 Stucco

Digital sample of actual colors may vary slightly.

**DRAPER®**



# SunTex® 80/90 Outdoor Fabric

## Exterior Solar Screens and Sun Shades

SunTex 80/90 is a unique woven mesh that can block 80-90% of the sun's hot rays before they enter your window, thus can help with **energy savings**. Perfect for outdoor blinds, exterior solar screens, and sun shading applications, SunTex 80/90 fabrics can be used for your window screens, door screens, patio, motorized shade, patio shades, or canopy.

SunTex exterior shading fabric is made of strong vinyl-coated polyester, so it is mildew and fade resistant, as well as pet resistant. Only an occasional cleaning with mild soap and water is necessary.

## SunTex® 80/90 Fabric

STANDARD WIDTH	<b>80:</b> 36" (91.4 cm), 48" (121.9 cm), 60" (152.4 cm), 72" (182.9 cm), 96" (243.8 cm). 120" (304.8 cm) available in Black, Brown, Dark Bronze, and Stucco <b>90:</b> 36" (91.4 cm), 48" (121.9 cm), 60" (152.4 cm), 72" (182.9 cm), 96" (243.8 cm). 120" (304.8 cm) (91.4 cm to 243.8 cm) available in all colors except Grey.	FABRIC THICKNESS	<b>80:</b> 0.032" (.812 mm) <b>90:</b> 0.035" (0.889 mm)
ROLL LENGTH	<b>80 and 90:</b> 100 Linear Feet (30.48 m). 120" (304.8 cm) in 90 Linear Feet (27.43 m)	OPENNESS FACTOR	<b>80:</b> Approximately 25% <b>90:</b> Approximately 10%
COMPOSITION	<b>80 and 90:</b> 31% Polyester, 69% Vinyl on Polyester	UV BLOCKAGE	<b>80:</b> Approximately 75% <b>90:</b> Approximately 90%
MESH WEIGHT	<b>80:</b> 12.9 oz/yd <sup>2</sup> (365.70 g/m <sup>2</sup> ) <b>90:</b> 16.5 oz/yd <sup>2</sup> (467.76 g/m <sup>2</sup> )	STIFFNESS	<b>80:</b> 445 Warp, 397 Fill (mg) <b>90:</b> 424 Warp, 450 Fill (mg)
BREAKING STRENGTH	<b>80:</b> 269 Warp, 237 Fill (lb) <b>90:</b> 378 Warp, 276 Fill (lb)		

## SPECIFICATIONS

FIRE CLASSIFICATION	<b>80:</b> California Technical Bulletin 117, NFPA 101 (Class B Rating), IBC Section 803.1.1 (Class B Rating). <b>90:</b> California Technical Bulletin 117, NFPA 101 (Class A Rating), IBC Section 803.1.1 (Class A Rating).
BACTERIA AND FUNGAL RESISTANCE	ASTM E 2180, ASTM G21; includes Microban antimicrobial additives.
ENVIRONMENTAL CERTIFICATION	Certified to GREENGUARD and GREENGUARD Gold standards for low chemical emissions into indoor air during product usage.
SAFE USE	RoHS/Directive 2002/95/EC, US Consumer Product Safety Commission Section 101, ANSI/WCMA A 100.1-2007 for lead content and REACH (EC 1907/2006) compliant.
STANDARD USES	Outdoor shades.
WARRANTY	10-year exterior.



PRODUCT CERTIFIED FOR LOW CHEMICAL EMISSIONS  
UL COM/IGG  
UL 2818



MIF Seal of Approval

## TECHNICAL DATA

	SOLAR OPTICAL PROPERTIES*				SHGC/G VALUE g-tot (glass & blind)*					
	Ts%	Rs%	As%	Tv%	Single			Insulating 1HA		
COLOR 80					1/8 CL	1/4 CL	1/4 HA	1/2 CL	1 CL	1 HA
Beige	32/31	30/30	38/39	39/39	0.33/0.32	0.32/0.31	0.30/0.30	0.29/0.28	0.27/0.27	0.23/0.23
Black	28/26	4/4	68/70	37/37	0.32/0.30	0.32/0.30	0.30/0.28	0.28/0.26	0.28/0.25	0.23/0.22
Brown	28/26	4/4	68/70	37/37	0.32/0.30	0.32/0.30	0.30/0.28	0.28/0.26	0.28/0.25	0.23/0.22
Grey	28/26	23/23	49/51	36/36	0.30/0.29	0.30/0.28	0.28/0.26	0.26/0.24	0.25/0.23	0.22/0.21
Stucco	31/30	38/38	31/32	36/36	0.31/0.30	0.30/0.30	0.29/0.28	0.27/0.26	0.26/0.25	0.23/0.22
Dark Bronze	28/26	5/5	67/69	38/38	0.32/0.30	0.31/0.30	0.30/0.28	0.28/0.26	0.26/0.25	0.23/0.22
COLOR 90					1/8 CL	1/4 CL	1/4 HA	1/2 CL	1 CL	1 HA
Beige	17/16	36/36	47/48	20/20	0.20/0.19	0.20/0.19	0.18/0.18	0.17/0.16	0.17/0.16	0.15/0.14
Black	14/12	4/4	82/84	19/19	0.21/0.19	0.21/0.19	0.20/0.18	0.17/0.16	0.17/0.15	0.15/0.14
Brown	13/12	5/5	82/83	18/18	0.20/0.19	0.20/0.19	0.19/0.18	0.17/0.16	0.16/0.15	0.15/0.14
Grey	14/13	27/27	59/60	18/18	0.18/0.17	0.18/0.17	0.17/0.16	0.16/0.15	0.15/0.14	0.13/0.13
Stucco	18/17	44/44	38/39	20/20	0.20/0.19	0.20/0.19	0.18/0.17	0.17/0.16	0.17/0.16	0.15/0.14
Dark Bronze	13/12	5/5	82/83	18/18	0.20/0.19	0.20/0.19	0.19/0.18	0.17/0.16	0.16/0.15	0.15/0.14

\* Properties and Values are represented 0/30. 0 Degree Profile Angle / 30 Degree Profile Angle; Fabrics Installed Externally.

\*Ts - Solar Transmittance, Rs - Solar Reflectance, As - Solar Absorptance, Tv - Visual Transmittance, \*SHGC = Solar Heat Gain Coefficient \*1/4 CL = 1/4" Clear Glass, 1 HA = 1" Heat Absorbing Glass \*Fabrics Installed Internally, Zero-Degree Profile Angle \*Solar Heat Gain Coefficient (SHGC) shown calculated according to Office of Building Technology, State and Community Programs, Energy Efficiency and Renewable Energy, U.S. Department of Energy's definition of SHGC. SHGC represents the percentage of solar heat gain that is transmitted to the interior through the glass and shading system. If you are using glass whose performance is listed in terms of SC, you may convert to SHGC by multiplying the SC by 0.87.

**PHIFER**

INCORPORATED

© SheerWeave is a registered trademark of PHIFER INCORPORATED.

© MICROBAN is a registered trademark of Microban Products Company.

TM UL, the UL logos and the UL mark are trademarks of UL LLC.

© PHIFER INCORPORATED 122

PROTECTION THAT LIVES ON  
**MICROBAN®**

SunTex 80, 90



**DRAPER®**

411 S. Pearl St. | Spiceland, IN 47385  
765.987.7999 | 800.238.7999  
draperinc.com